



GOODWIN CONSULTING GROUP

**SUCCESSOR AGENCY TO THE  
REDEVELOPMENT AGENCY OF THE  
CITY AND COUNTY OF SAN FRANCISCO  
COMMUNITY FACILITIES DISTRICT NO. 1  
(SOUTH BEACH)**

**CFD TAX ADMINISTRATION REPORT  
FISCAL YEAR 2021-22**

**September 1, 2021**

***Community Facilities District No. 1  
CFD Tax Administration Report***

**TABLE OF CONTENTS**

<b><i>Section</i></b>	<b><i>Page</i></b>
Executive Summary .....	i
I. Introduction.....	1
II. Purpose of Report .....	2
III. Special Tax Levy .....	3
IV. Taxable Parcels .....	4
V. State Reporting Requirements .....	5
Appendix A – Summary of Fiscal Year 2021-22 Special Tax Levy	
Appendix B – Fiscal Year 2021-22 Special Tax Levy for Individual Assessor’s Parcels	
Appendix C – Rate and Method of Apportionment of Special Taxes	
Appendix D – Boundary Map of Community Facilities District No. 1	
Appendix E – Assessor’s Parcel Maps for Fiscal Year 2021-22	

## ***EXECUTIVE SUMMARY***

---

The following summary provides a brief overview of the main points from this report regarding the Redevelopment Agency of the City and County of San Francisco Community Facilities District No. 1 (South Beach) (“CFD No. 1” or “CFD”):

### **Fiscal Year 2021-22 Special Tax Levy**

<b>Number of Taxed Parcels</b>	<b>Total Special Tax Levy</b>
562	\$191,142

For further detail regarding the special tax levy, or special tax rates, please refer to Section III of this report.

### **Taxable Parcels for Fiscal Year 2021-22**

<b>Parent Parcel</b>	<b>New Parcels</b>	<b>Taxable Parcels</b>
3773-005	3773-100A	1
3773-008	3773-200A	1
3773-009	3773-300A	1
3789-026	3789-026	1
3774-002	3774-133 thru -148	16
3789-025	3789-444 thru -509	66
3793-001	3793-006 thru -240	235
3774-002	3774-241 thru -432	241
3774-018 & -024	3774-192 thru -240	

For more information regarding the taxable property in CFD No. 1, please see Section IV of this report.

## ***I. INTRODUCTION***

---

### **Community Facilities District No. 1**

On August 30, 1988, the Redevelopment Agency of the City and County of San Francisco (the “Agency”) established CFD No. 1. In a landowner election on the same day, the then-qualified landowner electors within CFD No. 1 authorized the levy of a Mello-Roos special tax to fund certain public facilities and services. The landowners also voted to incur bonded indebtedness, secured by facilities special taxes levied in CFD No. 1 in an amount not to exceed \$5,700,000.

The types of facilities that were funded by facilities special tax revenues included streets, sidewalks, utilities, plazas and a park, and other public infrastructure improvements for the benefit of residents within CFD No. 1. In addition, the CFD is also authorized to fund public services. Proceeds of the services special tax may be used to pay for plantings including trees, shrubs and ground covers, special surfaces, including pavers, turf blocks and textured concrete, plaza lighting, and special street furniture including bollards, benches, planters and seat wells. As of August 1, 2013, all bonds previously outstanding have matured, and the facilities special tax is no longer levied for CFD No. 1.

Pursuant to California legislation enacted in 2011 and 2012, redevelopment agencies in California, including the Agency, were dissolved. The successor to the Agency (“Successor Agency”) has succeeded to certain rights of the Agency and is authorized to continue implementing CFD No. 1.

### **The Mello-Roos Community Facilities Act of 1982**

The California State Legislature approved the Mello-Roos Community Facilities Act of 1982 that provides for the levy of a special tax within a defined geographic area, namely a community facilities district, if such a levy is approved by two-thirds of the qualified electors in the area. Community facilities districts can generate funding for a broad range of facilities and eligible services. These services include police protection services, fire protection and suppression services, library services, recreation program services, flood and storm protection services, and maintenance of roads, parks, parkways, and open space. Special taxes can be allocated to property in any reasonable manner other than on an ad valorem basis.

## ***II. PURPOSE OF REPORT***

---

This CFD Tax Administration Report (the “Report”) presents findings from research and financial analysis performed by Goodwin Consulting Group, Inc. to determine the fiscal year 2021-22 special tax levy for CFD No. 1. The Report is intended to provide information to interested parties regarding CFD No. 1, including the current financial obligations of the CFD and special taxes to be levied in fiscal year 2021-22.

The Report is organized into the following sections:

- **Section III** identifies the financial obligations of CFD No. 1 for fiscal year 2021-22.
- **Section IV** summarizes the taxable parcels within the CFD.
- **Section V** provides a summary of state reporting requirements.

### ***III. SPECIAL TAX LEVY***

---

Pursuant to the RMA, which was adopted as an exhibit to the Resolution of Formation for CFD No. 1, the special taxes are apportioned to each parcel of land within CFD No. 1 based upon the proportion each parcel of land has to the total cost of maintenance services. The maximum special taxes for each parcel may be increased annually by the lesser of 5% per annum or the San Francisco/Oakland Consumer Price Index (all urban) for the twelve month period ending in April of each year. Appendix A of this Report contains a full summary of the maximum special tax rates in CFD No. 1.

The percentage of the maximum special tax that will be levied on each parcel in fiscal year 2021-22 is determined by the method of apportionment. For fiscal year 2021-22, the special tax requirement is \$191,142 and is calculated in the table below.

#### **Community Facilities District No. 1 Special Tax Requirement for Fiscal Year 2021-22\***

Maintenance Costs	\$125,500
Maintenance Reserves	\$34,584
Administrative Expenses	\$11,206
County Charge for Placing Levy on Tax Roll	\$5,620
10% Contingency	\$14,233
<b>Special Tax Requirement for Fiscal Year 2021-22</b>	<b>\$191,142</b>

*\*Totals may not sum due to rounding.*

The special tax roll, which identifies the special tax levied against each parcel in CFD No. 1 in fiscal year 2021-22, is provided in Appendix B.

#### ***IV. TAXABLE PARCELS***

---

As of June 30, 2021, there are 562 taxable parcels in CFD No. 1. Based on the current assessor's parcels within the CFD, the following table summarizes the taxable property by the parent parcels identified in the RMA:

**Community Facilities District No. 1  
Taxable Parcels  
Fiscal Year 2021-22**

<b>Parent Parcel</b>	<b>New Parcels</b>	<b>Taxable Parcels</b>
3773-005	3773-100A	1
3773-008	3773-200A	1
3773-009	3773-300A	1
3789-026	3789-026	1
3774-002	3774-133 thru -148	16
3789-025	3789-444 thru -509	66
3793-001	3793-006 thru -240	235
3774-002	3774-241 thru -432	241
3774-018 & -024	3774-192 thru -240	

## ***V. STATE REPORTING REQUIREMENTS***

---

### **Senate Bill No. 165**

On September 18, 2000, former Governor Gray Davis signed Senate Bill 165 which enacted the Local Agency Special Tax and Bond Accountability Act. In approving the bill, the Legislature declared that local agencies need to demonstrate to the voters that special taxes and bond proceeds are being spent on the facilities and services for which they were intended. To further this objective, the Legislature added Sections 50075.3 and 53411 to the California Government Code setting forth annual reporting requirements relative to special taxes collected and bonds issued by a local public agency. Pursuant to the Sections 50075.3 and 53411, the “chief fiscal officer” of the public agency will, by January 1, 2002, and at least once a year thereafter, file a report with the City setting forth (i) the amount of special taxes that have been collected and expended; (ii) the status of any project required or authorized to be funded by the special taxes; (iii) if bonds have been issued, the amount of bonds that have been collected and expended; and (iv) if bonds have been issued, the status of any project required or authorized to be funded from bond proceeds.

### **Assembly Bill No. 1666**

On July 25, 2016, Governor Jerry Brown signed Assembly Bill No. 1666, adding Section 53343.2 to the California Government Code (“GC”). The bill enhances the transparency of community facilities districts by requiring that certain reports be accessible on a local agency’s web site. Pursuant to Section 53343.2, a local agency that has a web site shall, within seven months after the last day of each fiscal year of the district, display prominently on its web site the following information:

Item (a): A copy of an annual report, if requested, pursuant to GC Section 53343.1. The report required by Section 53343.1 includes CFD budgetary information for the prior fiscal year and is only prepared by a community facilities district at the request of a person who resides in or owns property in the community facilities district. If the annual report has not been requested to be prepared, then a posting to the web site would not be necessary.

Item (b): A copy of the report provided to the California Debt and Investment Advisory Commission (“CDIAC”) pursuant to GC Section 53359.5. Under Section 53359.5, local agencies must provide CDIAC with the following: (i) notice of proposed sale of bonds; (ii) annual reports on the fiscal status of bonded districts; and (iii) notice of any failure to pay debt service on bonds, or of any draw on a reserve fund to pay debt service on bonds.

Item (c): A copy of the report provided to the State Controller’s Office pursuant to GC Section 12463.2. This section refers to the parcel tax portion of a local agency’s Financial Transactions Report that is prepared for the State Controller’s Office annually. Note that school districts are not subject to the reporting required by GC Section 12463.2.



## **Assembly Bill No. 1483**

On October 9, 2019, Governor Gavin Newsom signed Assembly Bill No. 1483, adding Section 65940.1 to the California Government Code. The law requires that a city, county, or special district that has an internet website, maintain on its website a current schedule of fees, exactions, and affordability requirements imposed by the public agency on all housing development projects. Pursuant to Section 65940.1, the definition of an exaction includes a special tax levied pursuant to the Mello-Roos Community Facilities Act.

Assembly Bill No. 1483 defines a housing development project as consisting of (a) residential units only; or (b) mixed-use developments consisting of residential and non-residential land uses with at least two-thirds of the square footage designated for residential use; or (c) transitional housing or supportive housing. Assembly Bill No. 1483 also requires a city, county, or special district to update this information on their website within 30 days of any changes made to the information.

## **APPENDIX A**

---

### ***Summary of Fiscal Year 2021-22 Special Tax Levy***

---

**Redevelopment Agency of the City and County of San Francisco  
Community Facilities District No. 1 (South Beach)  
Fiscal Year 2021-22 Special Tax Levy Summary**

<u>Parent Parcel</u>		<u>New Parcels</u>		<u>Property Identification</u>	<u>FY 2021-22</u>	<u>FY 2021-22</u>
<u>Block</u>	<u>Lot(s)</u>	<u>Block</u>	<u>Lot(s)</u>		<u>Maximum Maintenance Tax</u>	<u>Actual Maintenance Tax</u>
3773	005	3773	100A	Bayside Village	\$25,107	\$25,107
3773	008	3773	200A	Bayside Village	\$35,074	\$35,074
3773	009	3773	300A	Bayside Village	\$31,280	\$31,280
3789	026	3789	026	SBMA	\$41,508	\$41,508
3774	002	3774	133 thru 148	Hillborn-Hoover	\$7,231	\$7,231
3789	025	3789	444 thru 509	Reliance	\$8,627	\$8,627
3793	001	3793	006 thru 240	Embar. Vista	\$7,637	\$7,637
3774	002	3774	241 thru 432	200 Brannan	\$34,679	\$34,679
3774	018 & 024	3774	192 thru 240	Brannan Square		
<b>Fiscal Year 2021-22 Totals:</b>					<b>\$191,143</b>	<b>\$191,142</b>

*Goodwin Consulting Group, Inc.*

## **APPENDIX B**

---

*Fiscal Year 2021-22 Special Tax Levy  
for Individual Assessor's Parcels*

---

**Redevelopment Agency of the City and County of San Francisco  
Community Facilities District No. 1 (South Beach)  
Fiscal Year 2021-22 Special Tax Levy**

<b>Block</b>	<b>Lot</b>	<b>Square Feet of Living Space</b>	<b>Maximum Maintenance Special Tax</b>	<b>Actual Maintenance Special Tax</b>
3773	100A		\$25,107	\$25,107
3773	200A		\$35,074	\$35,074
3773	300A		\$31,280	\$31,280
3774	133	711	\$296	\$296
3774	134	926	\$386	\$386
3774	135	805	\$335	\$335
3774	136	1,005	\$419	\$419
3774	137	1,259	\$524	\$524
3774	138	1,269	\$528	\$528
3774	139	1,179	\$491	\$491
3774	140	1,209	\$503	\$503
3774	140Z	exempt	\$0	\$0
3774	141	1,259	\$524	\$524
3774	142	1,269	\$528	\$528
3774	143	1,179	\$491	\$491
3774	144	612	\$255	\$255
3774	145	1,229	\$512	\$512
3774	146	1,267	\$528	\$528
3774	147	1,468	\$611	\$611
3774	148	717	\$299	\$299
3774	192	919	\$96	\$96
3774	193	915	\$95	\$95
3774	194	838	\$87	\$87
3774	195	770	\$80	\$80
3774	196	762	\$79	\$79
3774	197	770	\$80	\$80
3774	198	1,018	\$106	\$106
3774	199	976	\$101	\$102
3774	200	1,010	\$105	\$105
3774	201	967	\$101	\$101
3774	202	1,029	\$107	\$107
3774	203	870	\$90	\$90
3774	204	745	\$77	\$77
3774	205	838	\$87	\$87
3774	206	770	\$80	\$80
3774	207	462	\$48	\$48
3774	208	770	\$80	\$80
3774	209	1,018	\$106	\$106
3774	210	1,004	\$104	\$104
3774	211	896	\$93	\$93
3774	212	865	\$90	\$90
3774	213	938	\$98	\$98
3774	214	705	\$73	\$73
3774	215	798	\$83	\$83
3774	216	785	\$82	\$82
3774	217	821	\$85	\$85
3774	218	792	\$82	\$82
3774	219	798	\$83	\$83
3774	220	758	\$79	\$79
3774	221	1,005	\$105	\$105
3774	222	860	\$89	\$89
3774	223	751	\$78	\$78
3774	224	845	\$88	\$88

**Redevelopment Agency of the City and County of San Francisco  
Community Facilities District No. 1 (South Beach)  
Fiscal Year 2021-22 Special Tax Levy**

<b>Block</b>	<b>Lot</b>	<b>Square Feet of Living Space</b>	<b>Maximum Maintenance Special Tax</b>	<b>Actual Maintenance Special Tax</b>
3774	225	776	\$81	\$81
3774	226	905	\$94	\$94
3774	227	764	\$79	\$79
3774	228	1,017	\$106	\$106
3774	229	1,015	\$106	\$106
3774	230	892	\$93	\$93
3774	231	680	\$71	\$71
3774	232	644	\$67	\$67
3774	233	658	\$68	\$68
3774	234	705	\$73	\$73
3774	235	798	\$83	\$83
3774	236	785	\$82	\$82
3774	237	815	\$85	\$85
3774	238	795	\$83	\$83
3774	239	797	\$83	\$83
3774	240	1,071	\$111	\$111
3774	241	1,194	\$124	\$124
3774	242	1,059	\$110	\$110
3774	243	1,362	\$142	\$142
3774	244	1,362	\$142	\$142
3774	245	1,362	\$142	\$142
3774	246	1,600	\$166	\$166
3774	247	1,625	\$169	\$169
3774	248	1,625	\$169	\$169
3774	249	1,621	\$169	\$169
3774	250	1,621	\$169	\$169
3774	251	1,625	\$169	\$169
3774	252	1,625	\$169	\$169
3774	253	1,617	\$168	\$168
3774	254	1,048	\$109	\$109
3774	255	1,420	\$148	\$148
3774	256	1,050	\$109	\$109
3774	257	990	\$103	\$103
3774	258	881	\$92	\$92
3774	259	1,917	\$199	\$199
3774	260	947	\$98	\$98
3774	261	1,863	\$194	\$194
3774	262	882	\$92	\$92
3774	263	871	\$91	\$91
3774	264	881	\$92	\$92
3774	265	870	\$90	\$90
3774	266	883	\$92	\$92
3774	267	2,013	\$209	\$209
3774	268	948	\$99	\$99
3774	269	888	\$92	\$92
3774	270	2,202	\$229	\$229
3774	271	1,532	\$159	\$159
3774	272	1,925	\$200	\$200
3774	273	865	\$90	\$90
3774	274	1,912	\$199	\$199
3774	275	925	\$96	\$96
3774	276	930	\$97	\$97
3774	277	866	\$90	\$90

**Redevelopment Agency of the City and County of San Francisco  
Community Facilities District No. 1 (South Beach)  
Fiscal Year 2021-22 Special Tax Levy**

<b>Block</b>	<b>Lot</b>	<b>Square Feet of Living Space</b>	<b>Maximum Maintenance Special Tax</b>	<b>Actual Maintenance Special Tax</b>
3774	278	866	\$90	\$90
3774	279	866	\$90	\$90
3774	280	817	\$85	\$85
3774	281	1,605	\$167	\$167
3774	282	1,613	\$168	\$168
3774	283	1,620	\$168	\$168
3774	284	1,620	\$168	\$168
3774	285	1,620	\$168	\$168
3774	286	1,620	\$168	\$168
3774	287	1,613	\$168	\$168
3774	288	1,151	\$120	\$120
3774	289	1,261	\$131	\$131
3774	290	1,261	\$131	\$131
3774	291	1,261	\$131	\$131
3774	292	1,500	\$156	\$156
3774	293	1,525	\$159	\$159
3774	294	1,525	\$159	\$159
3774	295	1,520	\$158	\$158
3774	296	1,520	\$158	\$158
3774	297	1,525	\$159	\$159
3774	298	1,525	\$159	\$159
3774	299	1,517	\$158	\$158
3774	300	1,048	\$109	\$109
3774	301	732	\$76	\$76
3774	302	796	\$83	\$83
3774	303	1,050	\$109	\$109
3774	304	1,100	\$114	\$114
3774	305	850	\$88	\$88
3774	306	2,141	\$223	\$223
3774	307	907	\$94	\$94
3774	308	1,863	\$194	\$194
3774	309	850	\$88	\$88
3774	310	783	\$81	\$81
3774	311	2,042	\$212	\$212
3774	312	782	\$81	\$81
3774	313	1,939	\$202	\$202
3774	314	2,107	\$219	\$219
3774	315	826	\$86	\$86
3774	316	1,914	\$199	\$199
3774	317	825	\$86	\$86
3774	318	1,907	\$198	\$198
3774	319	2,391	\$249	\$249
3774	320	1,366	\$142	\$142
3774	321	1,892	\$197	\$197
3774	322	1,978	\$206	\$206
3774	323	2,006	\$209	\$209
3774	324	1,825	\$190	\$190
3774	325	2,000	\$208	\$208
3774	326	1,940	\$202	\$202
3774	327	1,565	\$163	\$163
3774	328	1,515	\$158	\$158
3774	329	1,522	\$158	\$158
3774	330	1,522	\$158	\$158

**Redevelopment Agency of the City and County of San Francisco  
Community Facilities District No. 1 (South Beach)  
Fiscal Year 2021-22 Special Tax Levy**

<b>Block</b>	<b>Lot</b>	<b>Square Feet of Living Space</b>	<b>Maximum Maintenance Special Tax</b>	<b>Actual Maintenance Special Tax</b>
3774	331	1,522	\$158	\$158
3774	332	1,522	\$158	\$158
3774	333	1,515	\$158	\$158
3774	334	1,151	\$120	\$120
3774	335	1,261	\$131	\$131
3774	336	1,261	\$131	\$131
3774	337	1,261	\$131	\$131
3774	338	1,500	\$156	\$156
3774	339	1,525	\$159	\$159
3774	340	1,525	\$159	\$159
3774	341	1,520	\$158	\$158
3774	342	1,520	\$158	\$158
3774	343	1,525	\$159	\$159
3774	344	1,525	\$159	\$159
3774	345	1,517	\$158	\$158
3774	346	1,048	\$109	\$109
3774	347	732	\$76	\$76
3774	348	796	\$83	\$83
3774	349	1,050	\$109	\$109
3774	350	851	\$88	\$89
3774	351	850	\$88	\$88
3774	352	1,934	\$201	\$201
3774	353	2,097	\$218	\$218
3774	354	1,863	\$194	\$194
3774	355	2,042	\$212	\$212
3774	356	783	\$81	\$81
3774	357	1,939	\$202	\$202
3774	358	782	\$81	\$81
3774	359	1,962	\$204	\$204
3774	360	2,107	\$219	\$219
3774	361	2,391	\$249	\$249
3774	362	1,914	\$199	\$199
3774	363	1,892	\$197	\$197
3774	364	1,907	\$198	\$198
3774	365	1,978	\$206	\$206
3774	366	1,366	\$142	\$142
3774	367	2,006	\$209	\$209
3774	368	1,825	\$190	\$190
3774	369	2,000	\$208	\$208
3774	370	3,047	\$317	\$317
3774	371	2,051	\$213	\$213
3774	372	1,522	\$158	\$158
3774	373	1,522	\$158	\$158
3774	374	1,522	\$158	\$158
3774	375	1,522	\$158	\$158
3774	376	1,515	\$158	\$158
3774	377	1,151	\$120	\$120
3774	378	1,261	\$131	\$131
3774	379	1,261	\$131	\$131
3774	380	1,261	\$131	\$131
3774	381	1,500	\$156	\$156
3774	382	1,525	\$159	\$159
3774	383	1,525	\$159	\$159



**Redevelopment Agency of the City and County of San Francisco  
Community Facilities District No. 1 (South Beach)  
Fiscal Year 2021-22 Special Tax Levy**

<b>Block</b>	<b>Lot</b>	<b>Square Feet of Living Space</b>	<b>Maximum Maintenance Special Tax</b>	<b>Actual Maintenance Special Tax</b>
3774	384	1,520	\$158	\$158
3774	385	1,520	\$158	\$158
3774	386	1,525	\$159	\$159
3774	387	1,525	\$159	\$159
3774	388	1,517	\$158	\$158
3774	389	1,048	\$109	\$109
3774	390	902	\$94	\$94
3774	391	990	\$103	\$103
3774	392	1,050	\$109	\$109
3774	393	1,050	\$109	\$109
3774	394	988	\$103	\$103
3774	395	1,787	\$186	\$186
3774	396	1,949	\$203	\$203
3774	397	1,863	\$194	\$194
3774	398	1,928	\$200	\$201
3774	399	977	\$102	\$102
3774	400	1,939	\$202	\$202
3774	401	976	\$101	\$102
3774	402	1,962	\$204	\$204
3774	403	2,107	\$219	\$219
3774	404	2,391	\$249	\$249
3774	405	1,914	\$199	\$199
3774	406	1,892	\$197	\$197
3774	407	1,907	\$198	\$198
3774	408	1,926	\$200	\$200
3774	409	1,366	\$142	\$142
3774	410	1,831	\$190	\$190
3774	411	1,754	\$182	\$182
3774	412	1,820	\$189	\$189
3774	413	2,903	\$302	\$302
3774	414	2,025	\$211	\$211
3774	415	1,521	\$158	\$158
3774	416	1,521	\$158	\$158
3774	417	1,521	\$158	\$158
3774	418	1,521	\$158	\$158
3774	419	1,514	\$157	\$157
3774	420	1,991	\$207	\$207
3774	421	1,554	\$162	\$162
3774	422	1,848	\$192	\$192
3774	423	1,123	\$117	\$117
3774	424	2,273	\$236	\$236
3774	425	1,125	\$117	\$117
3774	426	1,306	\$136	\$136
3774	427	2,627	\$273	\$273
3774	428	2,850	\$296	\$296
3774	429	2,793	\$290	\$290
3774	430	3,380	\$351	\$352
3774	431	1,523	\$158	\$158
3774	432	1,752	\$182	\$182
3789	026		\$41,508	\$41,508
3789	444	1,497	\$131	\$131
3789	445	1,809	\$158	\$158
3789	446	1,441	\$126	\$126

**Redevelopment Agency of the City and County of San Francisco  
Community Facilities District No. 1 (South Beach)  
Fiscal Year 2021-22 Special Tax Levy**

<b>Block</b>	<b>Lot</b>	<b>Square Feet of Living Space</b>	<b>Maximum Maintenance Special Tax</b>	<b>Actual Maintenance Special Tax</b>
3789	447	1,560	\$136	\$136
3789	448	1,554	\$136	\$136
3789	449	1,554	\$136	\$136
3789	450	1,554	\$136	\$136
3789	451	1,554	\$136	\$136
3789	452	1,554	\$136	\$136
3789	453	1,560	\$136	\$136
3789	454	1,554	\$136	\$136
3789	455	1,885	\$165	\$165
3789	456	1,619	\$141	\$141
3789	457	1,577	\$138	\$138
3789	458	1,565	\$137	\$137
3789	459	1,572	\$137	\$137
3789	460	1,565	\$137	\$137
3789	461	1,572	\$137	\$137
3789	462	1,565	\$137	\$137
3789	463	1,572	\$137	\$137
3789	464	1,577	\$138	\$138
3789	465	1,732	\$151	\$151
3789	466	1,298	\$113	\$113
3789	467	1,619	\$141	\$141
3789	468	1,577	\$138	\$138
3789	469	1,565	\$137	\$137
3789	470	1,572	\$137	\$137
3789	471	1,565	\$137	\$137
3789	472	1,572	\$137	\$137
3789	473	1,565	\$137	\$137
3789	474	1,572	\$137	\$137
3789	475	1,577	\$138	\$138
3789	476	1,732	\$151	\$151
3789	477	1,466	\$128	\$128
3789	478	1,211	\$106	\$106
3789	479	1,397	\$122	\$122
3789	480	1,400	\$122	\$122
3789	481	1,410	\$123	\$123
3789	482	1,410	\$123	\$123
3789	483	1,410	\$123	\$123
3789	484	1,410	\$123	\$123
3789	485	1,397	\$122	\$122
3789	486	1,410	\$123	\$123
3789	487	1,693	\$148	\$148
3789	488	1,684	\$147	\$147
3789	489	1,450	\$127	\$127
3789	490	1,259	\$110	\$110
3789	491	1,251	\$109	\$109
3789	492	1,456	\$127	\$127
3789	493	1,456	\$127	\$127
3789	494	1,259	\$110	\$110
3789	495	1,251	\$109	\$109
3789	496	1,430	\$125	\$125
3789	497	1,435	\$125	\$125
3789	498	1,591	\$139	\$139
3789	499	1,591	\$139	\$139

**Redevelopment Agency of the City and County of San Francisco  
Community Facilities District No. 1 (South Beach)  
Fiscal Year 2021-22 Special Tax Levy**

<b>Block</b>	<b>Lot</b>	<b>Square Feet of Living Space</b>	<b>Maximum Maintenance Special Tax</b>	<b>Actual Maintenance Special Tax</b>
3789	500	1,450	\$127	\$127
3789	501	1,259	\$110	\$110
3789	502	1,251	\$109	\$109
3789	503	1,456	\$127	\$127
3789	504	1,456	\$127	\$127
3789	505	1,259	\$110	\$110
3789	506	1,251	\$109	\$109
3789	507	1,430	\$125	\$125
3789	508	1,437	\$126	\$126
3789	509	1,591	\$139	\$139
3793	006	1,447	\$40	\$40
3793	007	1,402	\$38	\$38
3793	008	1,348	\$37	\$37
3793	009	1,425	\$39	\$39
3793	010	1,958	\$54	\$54
3793	011	1,293	\$35	\$35
3793	012	1,444	\$39	\$39
3793	013	1,194	\$33	\$33
3793	014	1,305	\$36	\$36
3793	015	1,335	\$36	\$36
3793	016	1,110	\$30	\$30
3793	017	1,336	\$37	\$37
3793	018	1,362	\$37	\$37
3793	019	1,336	\$37	\$37
3793	020	1,362	\$37	\$37
3793	021	1,255	\$34	\$34
3793	022	4,510	\$123	\$123
3793	023	1,234	\$34	\$34
3793	024	1,325	\$36	\$36
3793	025	1,377	\$38	\$38
3793	026	1,325	\$36	\$36
3793	027	1,377	\$38	\$38
3793	028	1,504	\$41	\$41
3793	029	1,404	\$38	\$38
3793	030	1,374	\$38	\$38
3793	031	1,435	\$39	\$39
3793	032	1,384	\$38	\$38
3793	033	1,451	\$40	\$40
3793	034	1,092	\$30	\$30
3793	035	1,175	\$32	\$32
3793	036	1,080	\$30	\$30
3793	037	1,098	\$30	\$30
3793	038	1,116	\$30	\$31
3793	039	1,146	\$31	\$31
3793	040	1,139	\$31	\$31
3793	041	1,059	\$29	\$29
3793	042	1,242	\$34	\$34
3793	043	1,141	\$31	\$31
3793	044	1,302	\$36	\$36
3793	045	1,156	\$32	\$32
3793	046	1,127	\$31	\$31
3793	047	1,227	\$34	\$34
3793	048	1,163	\$32	\$32

**Redevelopment Agency of the City and County of San Francisco  
Community Facilities District No. 1 (South Beach)  
Fiscal Year 2021-22 Special Tax Levy**

<b>Block</b>	<b>Lot</b>	<b>Square Feet of Living Space</b>	<b>Maximum Maintenance Special Tax</b>	<b>Actual Maintenance Special Tax</b>
3793	049	1,116	\$30	\$31
3793	050	1,115	\$30	\$30
3793	051	1,094	\$30	\$30
3793	052	1,089	\$30	\$30
3793	053	1,133	\$31	\$31
3793	054	1,106	\$30	\$30
3793	055	1,452	\$40	\$40
3793	056	1,255	\$34	\$34
3793	057	1,092	\$30	\$30
3793	058	1,175	\$32	\$32
3793	059	1,080	\$30	\$30
3793	060	925	\$25	\$25
3793	061	1,098	\$30	\$30
3793	062	1,116	\$30	\$31
3793	063	1,146	\$31	\$31
3793	064	1,139	\$31	\$31
3793	065	1,059	\$29	\$29
3793	066	1,242	\$34	\$34
3793	067	1,141	\$31	\$31
3793	068	1,302	\$36	\$36
3793	069	1,156	\$32	\$32
3793	070	1,127	\$31	\$31
3793	071	1,227	\$34	\$34
3793	072	1,163	\$32	\$32
3793	073	1,116	\$30	\$31
3793	074	1,115	\$30	\$30
3793	075	1,094	\$30	\$30
3793	076	1,089	\$30	\$30
3793	077	921	\$25	\$25
3793	078	1,133	\$31	\$31
3793	079	1,106	\$30	\$30
3793	080	1,234	\$34	\$34
3793	081	1,255	\$34	\$34
3793	082	1,092	\$30	\$30
3793	083	1,175	\$32	\$32
3793	084	1,080	\$30	\$30
3793	085	925	\$25	\$25
3793	086	1,098	\$30	\$30
3793	087	1,116	\$30	\$31
3793	088	1,146	\$31	\$31
3793	089	1,139	\$31	\$31
3793	090	1,059	\$29	\$29
3793	091	1,242	\$34	\$34
3793	092	1,141	\$31	\$31
3793	093	1,302	\$36	\$36
3793	094	1,156	\$32	\$32
3793	095	1,127	\$31	\$31
3793	096	1,227	\$34	\$34
3793	097	1,163	\$32	\$32
3793	098	1,116	\$30	\$31
3793	099	1,115	\$30	\$30
3793	100	1,094	\$30	\$30
3793	101	1,089	\$30	\$30

**Redevelopment Agency of the City and County of San Francisco  
Community Facilities District No. 1 (South Beach)  
Fiscal Year 2021-22 Special Tax Levy**

<b>Block</b>	<b>Lot</b>	<b>Square Feet of Living Space</b>	<b>Maximum Maintenance Special Tax</b>	<b>Actual Maintenance Special Tax</b>
3793	102	921	\$25	\$25
3793	103	1,133	\$31	\$31
3793	104	1,106	\$30	\$30
3793	105	1,234	\$34	\$34
3793	106	1,255	\$34	\$34
3793	107	1,092	\$30	\$30
3793	108	1,175	\$32	\$32
3793	109	1,080	\$30	\$30
3793	110	925	\$25	\$25
3793	111	1,098	\$30	\$30
3793	112	1,116	\$30	\$31
3793	113	1,146	\$31	\$31
3793	114	1,139	\$31	\$31
3793	115	1,059	\$29	\$29
3793	116	1,242	\$34	\$34
3793	117	1,141	\$31	\$31
3793	118	1,302	\$36	\$36
3793	119	1,156	\$32	\$32
3793	120	1,127	\$31	\$31
3793	121	1,227	\$34	\$34
3793	122	1,163	\$32	\$32
3793	123	1,116	\$30	\$31
3793	124	1,115	\$30	\$30
3793	125	1,094	\$30	\$30
3793	126	1,089	\$30	\$30
3793	127	921	\$25	\$25
3793	128	1,133	\$31	\$31
3793	129	1,106	\$30	\$30
3793	130	1,234	\$34	\$34
3793	131	1,255	\$34	\$34
3793	132	1,092	\$30	\$30
3793	133	1,175	\$32	\$32
3793	134	1,080	\$30	\$30
3793	135	925	\$25	\$25
3793	136	1,098	\$30	\$30
3793	137	1,116	\$30	\$31
3793	138	1,146	\$31	\$31
3793	139	1,139	\$31	\$31
3793	140	1,059	\$29	\$29
3793	141	1,242	\$34	\$34
3793	142	1,141	\$31	\$31
3793	143	1,302	\$36	\$36
3793	144	1,156	\$32	\$32
3793	145	1,127	\$31	\$31
3793	146	1,227	\$34	\$34
3793	147	1,163	\$32	\$32
3793	148	1,116	\$30	\$31
3793	149	1,115	\$30	\$30
3793	150	1,094	\$30	\$30
3793	151	1,089	\$30	\$30
3793	152	921	\$25	\$25
3793	153	1,133	\$31	\$31
3793	154	1,106	\$30	\$30

**Redevelopment Agency of the City and County of San Francisco  
Community Facilities District No. 1 (South Beach)  
Fiscal Year 2021-22 Special Tax Levy**

<b>Block</b>	<b>Lot</b>	<b>Square Feet of Living Space</b>	<b>Maximum Maintenance Special Tax</b>	<b>Actual Maintenance Special Tax</b>
3793	155	1,234	\$34	\$34
3793	156	1,111	\$30	\$30
3793	157	1,369	\$37	\$37
3793	158	1,098	\$30	\$30
3793	159	1,116	\$30	\$31
3793	160	1,146	\$31	\$31
3793	161	1,139	\$31	\$31
3793	162	1,059	\$29	\$29
3793	163	1,242	\$34	\$34
3793	164	1,141	\$31	\$31
3793	165	1,302	\$36	\$36
3793	166	1,156	\$32	\$32
3793	167	1,127	\$31	\$31
3793	168	1,227	\$34	\$34
3793	169	1,163	\$32	\$32
3793	170	1,116	\$30	\$31
3793	171	1,115	\$30	\$30
3793	172	1,094	\$30	\$30
3793	173	1,111	\$30	\$30
3793	174	1,369	\$37	\$37
3793	175	1,111	\$30	\$30
3793	176	1,369	\$37	\$37
3793	177	1,098	\$30	\$30
3793	178	1,116	\$30	\$31
3793	179	1,245	\$34	\$34
3793	180	1,090	\$30	\$30
3793	181	1,245	\$34	\$34
3793	182	1,090	\$30	\$30
3793	183	1,115	\$30	\$30
3793	184	1,094	\$30	\$30
3793	185	1,111	\$30	\$30
3793	186	1,369	\$37	\$37
3793	187	1,111	\$30	\$30
3793	188	1,369	\$37	\$37
3793	189	1,098	\$30	\$30
3793	190	1,116	\$30	\$31
3793	191	1,245	\$34	\$34
3793	192	1,090	\$30	\$30
3793	193	1,245	\$34	\$34
3793	194	1,090	\$30	\$30
3793	195	1,115	\$30	\$30
3793	196	1,094	\$30	\$30
3793	197	1,111	\$30	\$30
3793	198	1,369	\$37	\$37
3793	199	1,111	\$30	\$30
3793	200	1,369	\$37	\$37
3793	201	1,098	\$30	\$30
3793	202	1,116	\$30	\$31
3793	203	1,245	\$34	\$34
3793	204	1,090	\$30	\$30
3793	205	1,245	\$34	\$34
3793	206	1,090	\$30	\$30
3793	207	1,115	\$30	\$30

**Redevelopment Agency of the City and County of San Francisco  
Community Facilities District No. 1 (South Beach)  
Fiscal Year 2021-22 Special Tax Levy**

<b>Block</b>	<b>Lot</b>	<b>Square Feet of Living Space</b>	<b>Maximum Maintenance Special Tax</b>	<b>Actual Maintenance Special Tax</b>
3793	208	1,094	\$30	\$30
3793	209	1,111	\$30	\$30
3793	210	1,369	\$37	\$37
3793	211	1,111	\$30	\$30
3793	212	1,369	\$37	\$37
3793	213	1,098	\$30	\$30
3793	214	1,116	\$30	\$31
3793	215	1,245	\$34	\$34
3793	216	1,090	\$30	\$30
3793	217	1,245	\$34	\$34
3793	218	1,090	\$30	\$30
3793	219	1,115	\$30	\$30
3793	220	1,094	\$30	\$30
3793	221	1,111	\$30	\$30
3793	222	1,369	\$37	\$37
3793	223	1,111	\$30	\$30
3793	224	1,369	\$37	\$37
3793	225	1,098	\$30	\$30
3793	226	1,116	\$30	\$31
3793	227	1,245	\$34	\$34
3793	228	1,090	\$30	\$30
3793	229	1,245	\$34	\$34
3793	230	1,090	\$30	\$30
3793	231	1,115	\$30	\$30
3793	232	1,094	\$30	\$30
3793	233	1,111	\$30	\$30
3793	234	1,369	\$37	\$37
3793	235	1,111	\$30	\$30
3793	236	1,369	\$37	\$37
3793	237	1,098	\$30	\$30
3793	238	1,116	\$30	\$31
3793	239	1,245	\$34	\$34
3793	240	1,090	\$30	\$30
<b>Totals for Fiscal Year 2021-22:</b>			<b>\$191,143</b>	<b>\$191,142</b>

*Goodwin Consulting Group, Inc.*

## **APPENDIX C**

---

### ***Rate and Method of Apportionment of Special Taxes***

---



## APPENDIX A

### RATE AND METHOD OF APPORTIONMENT OF SPECIAL TAX

Set forth below is the description of the rate and method of apportionment of the Special Tax in the Resolution of Formation approved by the voters on August 30, 1988.

The rate and method of apportionment of the authorized special tax is as follows:

The special taxes are apportioned to each parcel of land within Community Facilities District No. 1 (South Beach) based upon the proportion each parcel of land has to the total costs of the improvements and costs of issuance and costs of maintenance services. The maximum special taxes for each parcel are as follows for the following years (Services levy is for fiscal year 1989-90 only) and said total maximum amounts shall be increased by an amount of not to exceed one percent (1%) of each annual installment to pay for costs of collection and administration of said special taxes:

Maximum Special Tax For For Parcel/Lot	Maximum Special Tax For Capital Improvements Per Year	Maintenance Services For Fiscal Year 1989-90
3774/2	\$24,000	\$2,952
3773/5	107,000	10,250
3773/8	144,000	14,319
3773/9	126,000	12,770
3789/25	47,000	3,522
3789/26	171,000	16,946
3793/1	50,000	3,118

The Maximum Special Taxes for Capital Improvements are calculated to provide debt service upon special tax bonds in the principal amount of \$5,400,000 maturing over a period of 25 years at a rate of interest of 9% per annum.

The Maximum Special Tax for Maintenance services are estimated to total \$63,877 for the Fiscal Year 1989-90. Thereafter the taxes may be increased annually by the lesser of 5% per annum or the San Francisco/Oakland Consumer Price Index (all urban) for the twelve month period ending in April of each year.

In the event a parcel shown above is subdivided, combined or otherwise revised, the above special taxes shall be apportioned to the resulting parcel or parcels in the proportion to which the resulting parcel or parcels bear to the original parcel.

**APPENDIX D**

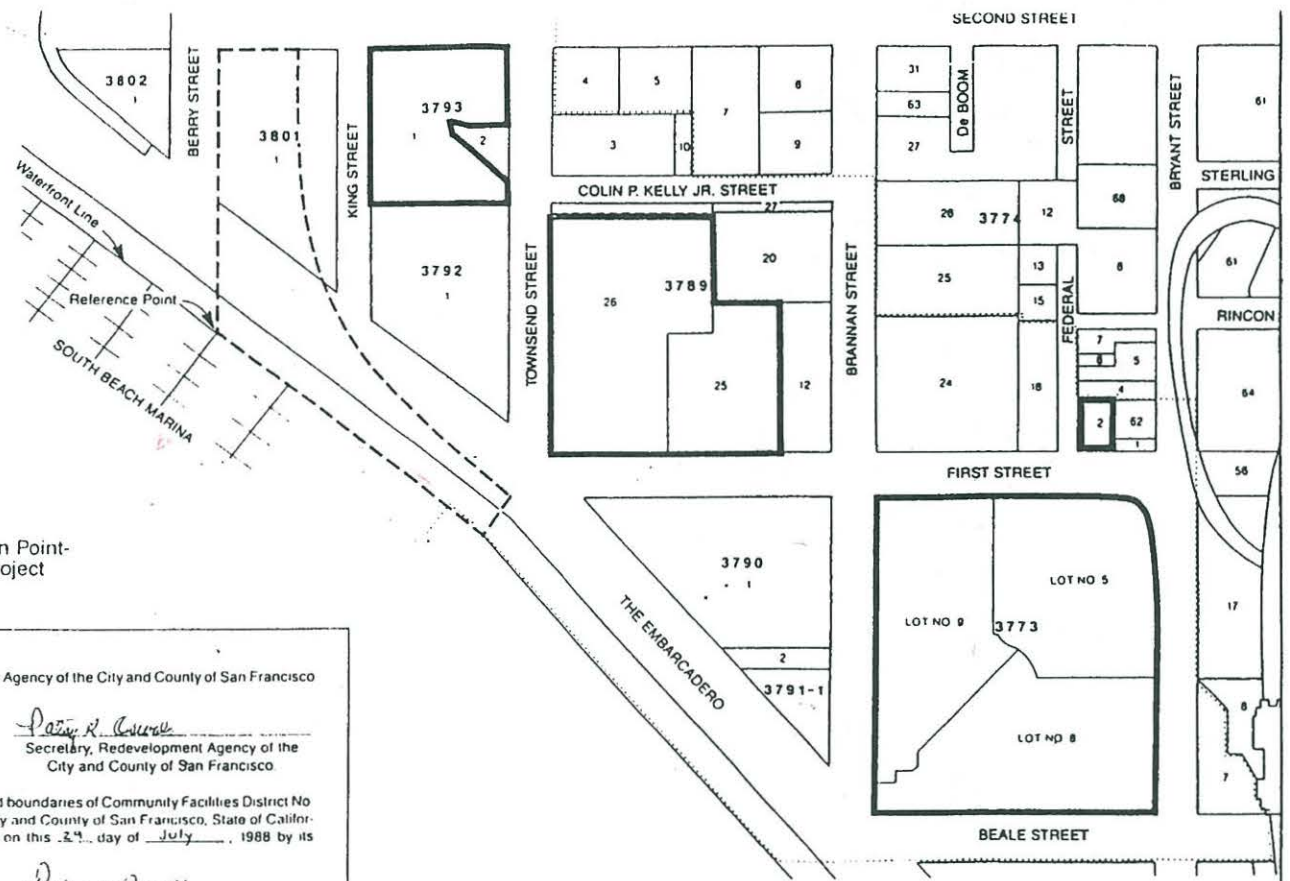
---

*Boundary Map of  
Community Facilities District No. 1*

---



NOT TO SCALE



- District Boundary
- - - South Beach Park
- South Beach Sub-Area of Rincon Point
- South Beach Redevelopment Project

Filed in the office of the Secretary of the Redevelopment Agency of the City and County of San Francisco this 23 day of July, 1988.

*Patsy R. Curran*  
 Secretary, Redevelopment Agency of the City and County of San Francisco.

I hereby certify that the within map showing the proposed boundaries of Community Facilities District No. 1 (South Beach), The Redevelopment Agency of the City and County of San Francisco, State of California, was approved at a regular meeting thereof, held on this 24 day of July, 1988 by its Resolution No. 154-88.

*Patsy R. Curran*  
 Secretary, Redevelopment Agency of the City and County of San Francisco.

Filed this \_\_\_ day of \_\_\_\_\_, 1988 at the hour of \_\_\_ o'clock \_\_\_m, in Book \_\_\_ of Maps of Assessment and Community Facilities Districts at page \_\_\_ in the Office of the Recorder of the City and County of San Francisco, State of California.

*[Signature]*  
 Recorder, City and County of San Francisco.

SAN FRANCISCO CH. RECORDER'S OFFICE

DATE: 8-22-1988  
 TIME: 10:15 AM  
 FILE NO: 154-88

**FILED**  
 Not Returnable





SAN FRANCISCO REDEVELOPMENT AGENCY  
 PROPOSED BOUNDARIES OF  
 COMMUNITY FACILITIES DISTRICT NO. 1  
 (SOUTH BEACH)  
 CITY AND COUNTY OF SAN FRANCISCO  
 STATE OF CALIFORNIA

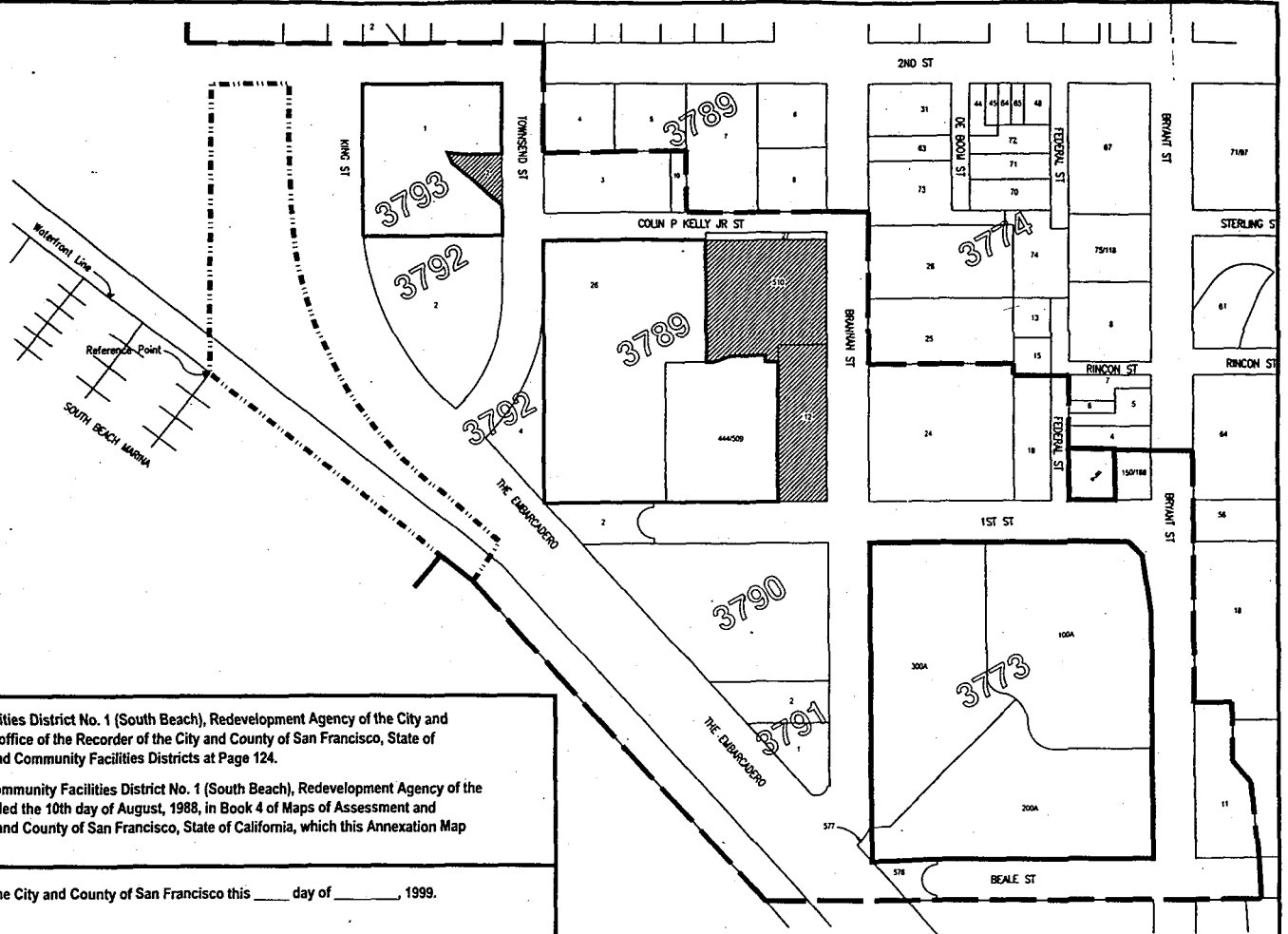
7/88 Kennedy/Jenks/Chilton San Francisco 811054 Fig. 1



Not to Scale

**Legend**

-  Annexed Parcels
-  Existing Community Facilities District No. 1
-  South Beach Park
-  South Beach Sub-Area of Rincon Point - South Beach Redevelopment Project



This Amended Annexation Map amends Annexation Map No. 1 of Community Facilities District No. 1 (South Beach), Redevelopment Agency of the City and County of San Francisco, County of San Francisco, State of California, filed in the office of the Recorder of the City and County of San Francisco, State of California, on the 27th day of October, 1999, in Book "Z" of Maps of Assessment and Community Facilities Districts at Page 124.

Reference is hereby made to that certain map entitled "Proposed Boundaries of Community Facilities District No. 1 (South Beach), Redevelopment Agency of the City and County of San Francisco, County of San Francisco, State of California," filed the 10th day of August, 1988, in Book 4 of Maps of Assessment and Community Facilities Districts at Page 20, in the office of the Recorder of the City and County of San Francisco, State of California, which this Annexation Map affects.

Filed in the office of the Agency Secretary of the Redevelopment Agency of the City and County of San Francisco this \_\_\_\_ day of \_\_\_\_\_, 1999.

\_\_\_\_\_  
Agency Secretary

I hereby certify that the within map showing the proposed boundaries of Annexation No. 1 to Community Facilities District No. 1 (South Beach), Redevelopment Agency of the City and County of San Francisco, County of San Francisco, State of California, was approved by the Redevelopment Agency of the City and County of San Francisco, at a meeting thereof, held on the \_\_\_\_ day of \_\_\_\_\_, 1999 by its Resolution No. \_\_\_\_\_.

\_\_\_\_\_  
Agency Secretary

Filed this \_\_\_\_ day of \_\_\_\_\_, 1999 in Book \_\_\_\_ of Maps of Assessment and Community Facilities Districts at page \_\_\_\_ in the Office of the Recorder of the City and County of San Francisco, State of California.

\_\_\_\_\_  
Recorder  
City and County of San Francisco

**AMENDED ANNEXATION MAP NO. 1 OF  
COMMUNITY FACILITIES DISTRICT NO. 1 (SOUTH BEACH)  
OF THE REDEVELOPMENT AGENCY  
OF THE CITY AND COUNTY OF SAN FRANCISCO,  
COUNTY OF SAN FRANCISCO, STATE OF CALIFORNIA**

**APPENDIX E**

---

*Assessor's Parcel Maps for  
Fiscal Year 2021-22*

---

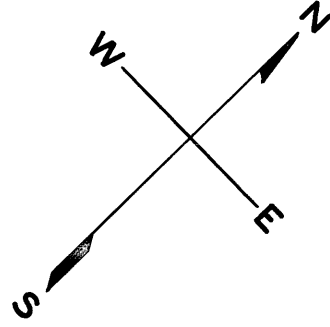
3773

OLD 100 VARA BLK 345 & 339

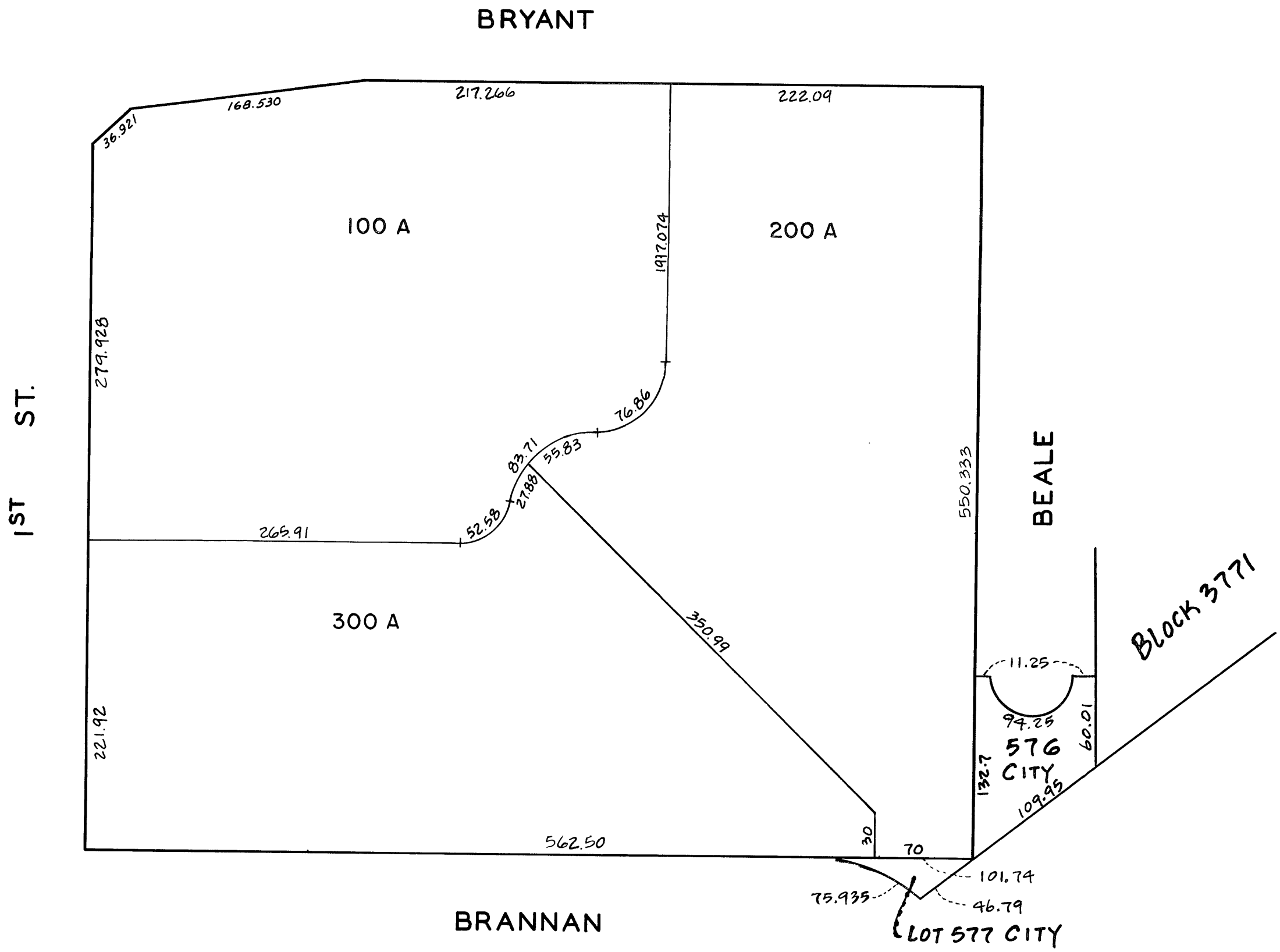
LOTS MERGED

LOT 1 INTO LOT ST. '1953'  
LOT 576 & 577 ST. VACATION - '90 ROLL

REVISED 1964  
" '87  
" '88  
" '90



SCALE: 1" = 80'



lot2 into lots133to148 for 1998 roll    lots64&65 into lot 191 for 2003 roll    lot71&72 into lots 444 for 2014 roll  
 lots 1 & 62 into lot 149 for 1999 roll    lot190 into lots241to432 for 2004 roll  
 lot149 into lots 150/188 for 1999 roll    lot189 into lots192to240 for 2004 roll  
 lots18&24 into lots189&190 for 2003 roll    lot15 into lots433to443 for 2007 roll

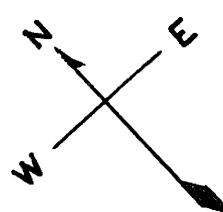
**LOTS MERGED**

LOTS 2-3 INTO LOT 1-1943  
 LOTS 9-10-11-56-57-58 INTO LOT 8-1943  
 LOT 14 INTO LOT 13-1943  
 LOTS 16-17 INTO LOT 15-1943  
 LOTS 19 TO 23 INTO LOT 18-1943  
 LOT 24 INTO LOT 24-1943  
 LOTS 28-29-34-35-36 INTO LOT 27-1943  
 LOTS 41-42-43 INTO LOT 40-1943  
 LOT 50 INTO LOT 49-1943  
 LOT 37 INTO LOT 27-1955  
 LOTS 52-53 INTO LOT 38-1943  
 LOT 54 INTO LOT 53-1943  
 LOTS 60-61 INTO LOT 5-1943  
 LOT 59 INTO LOT 7-1943  
 LOTS 48-47-49-49A INTO LOT 40-1951  
 LOTS 39-51 INTO LOT 38-1952  
 500 38.66 INTO LOT 63-85

**REVISED '64**

" '77  
 " '84  
 " '85  
 " '87  
 " '88  
 " '92  
 Revised 1999  
 Revised 1998  
 Revised 2003  
 Revised 2004  
 Revised 2007  
 Revised 2014

**SHT. I  
 3774**



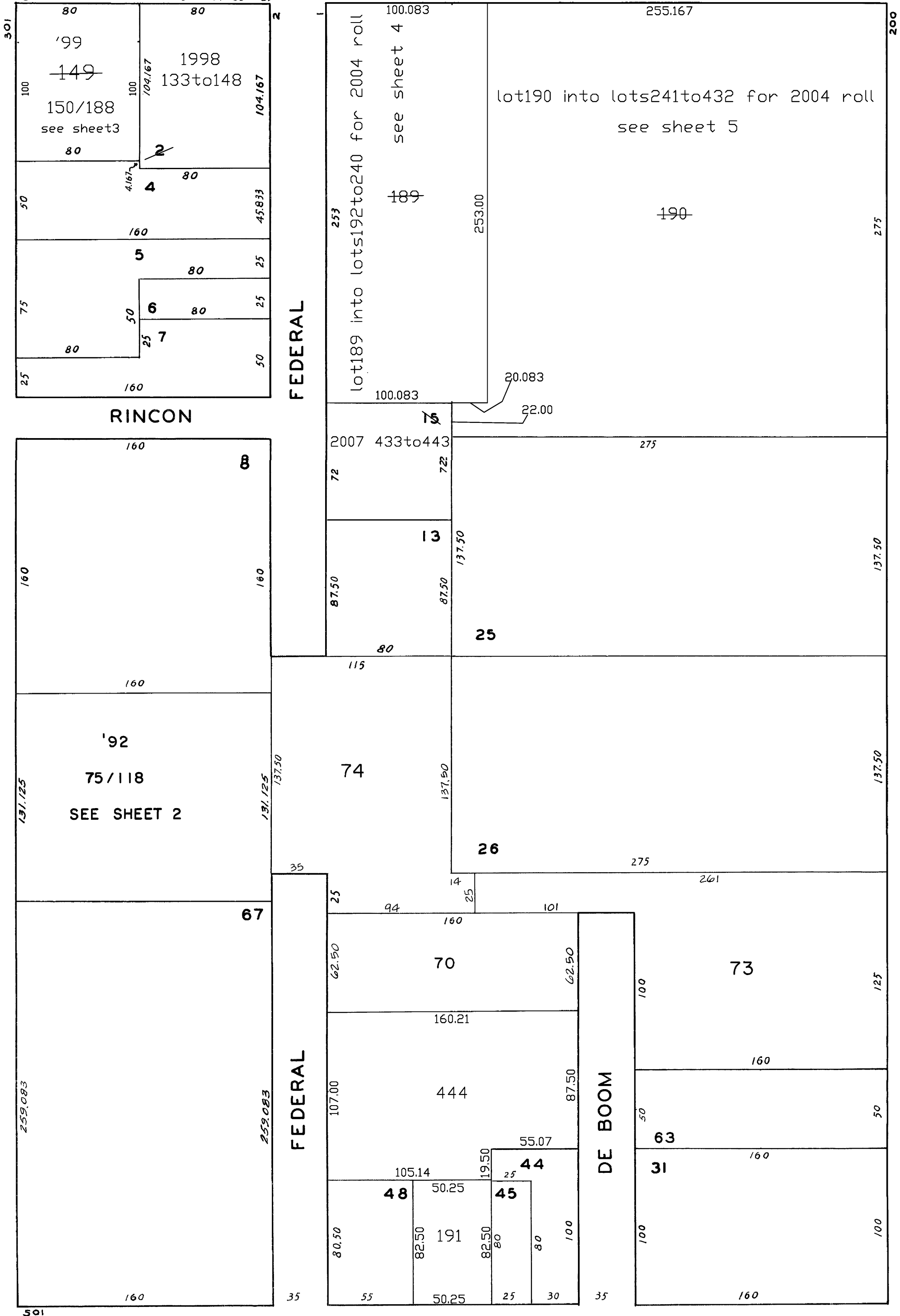
**1ST (DELANCEY ST.) 100 VARA BLK. 351**

**540 DELANCEY ST.  
 A CONDOMINIUM**

LOT	UNIT	% COMM.	AREA
133	101	4.09	
134	102	5.41	
135	103	4.63	
136	201	5.78	
137	202	7.25	
138	203	7.30	
139	204	6.79	
140	301	6.96	
141	302	7.25	
142	303	7.30	
143	304	6.79	
144	305	3.52	
145	401	7.07	
146	402	7.28	
147	403	8.45	
148	404	4.13	

**41 FEDERAL ST.**

LOT	UNIT
433	10
434	11
435	21
436	22
437	23
438	31
439	32
440	33
441	41
442	42
443	43



**THE LOFTS**  
**355 BRYANT STREET**  
**A CONDOMINIUM PROJECT**

UNIT	LOT
101	75
102	76
103	77
104	78
105	79
106	80
107	81
108	82
109	83
110	84
111	85
201	86
202	87
203	88
204	89
205	90
206	91
207	92
208	93
209	94
210	95
211	96
301	97
302	98
303	99
304	100
305	101
306	102
307	103
308	104
309	105
310	106
311	107
401	108
402	109
403	110
404	111
405	112
406	113
407	114
408	115
409	116
410	117
411	118

EACH UNIT SHALL HAVE AN  
UNDIVIDED ONE FORTY-FOUR (1/44) INTEREST.



**BLOCK 3774**  
**SHEET 3**

Revised 1999

**301 BRYANT STREET**

<u>A CONDOMINIUM</u>		
<u>LOT</u>	<u>UNIT</u>	<u>% COMM. AREA</u>
150	D11	1.77
151	D21	2.03
152	D22	1.72
153	D23	2.16
154	D24	1.46
155	D25	1.39
156	D31	2.03
157	D32	1.72
158	D33	2.16
159	D34	1.46
160	D35	1.39
161	101	2.81
162	102	2.90
163	103	3.07
164	104	2.75
165	201	2.81
166	202	2.90
167	203	3.07
168	204	2.75
169	301	2.81
170	302	2.90
171	303	3.07
172	304	2.75
173	401	2.81
174	402	2.90
175	403	3.07
176	404	2.79
177	501	2.81
178	502	2.90
179	503	3.07
180	504	2.75
181	601	2.81
182	602	2.90
183	603	3.07
184	604	2.75
185	701	2.81
186	702	2.90
187	703	3.07
188	704	2.75

LOTS		MERGED	
LOTS 2E, 2D	INTO LOT 1B	-1943	
" 6	" 5	"	
" 2 & 2A	" 1	"	
" 2B, 2C	" 1A	"	
" 1D	" 1B	-56	

Lot 972 into Block 3789A-Lots 1 to 74 for 2016 roll

lot857 into lots858/971 for 2005 roll  
lots20 & 25 into lots 510&511 for 1997 roll  
lot511 into lots 444/509 for 1997 roll  
lots12 & 510 into lot514 for 2000 roll  
lot514 into lots515/517 for 2001 roll  
lot515 into lots518to648 for 2001 roll  
lot516 into lots649to751 for 2002 roll  
lot517 into lots752to856 for 2003 roll  
lots4&5 into lot857 for 2004 roll

REVISED	'61
"	'66
"	'67
"	'68
"	'71
"	'75
"	'86

Revised 2002 Revised 2003  
Revised 1997 Revised 2005  
Revised 2000  
Revised 2001

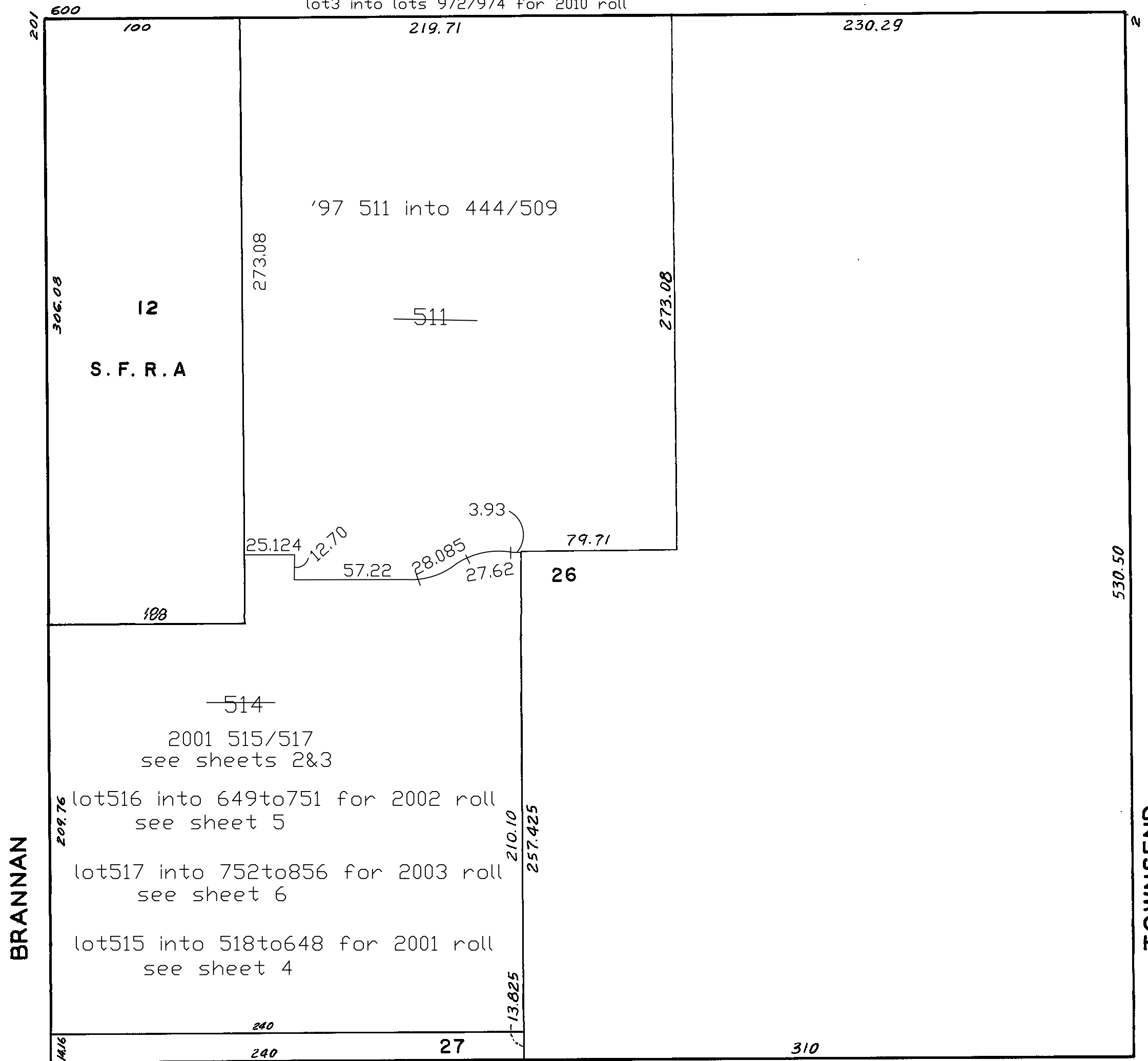
SHEET 1

**3789**

Revised 2010  
REVISED 2016

1ST. ST.  
lot3 into lots 972/974 for 2010 roll

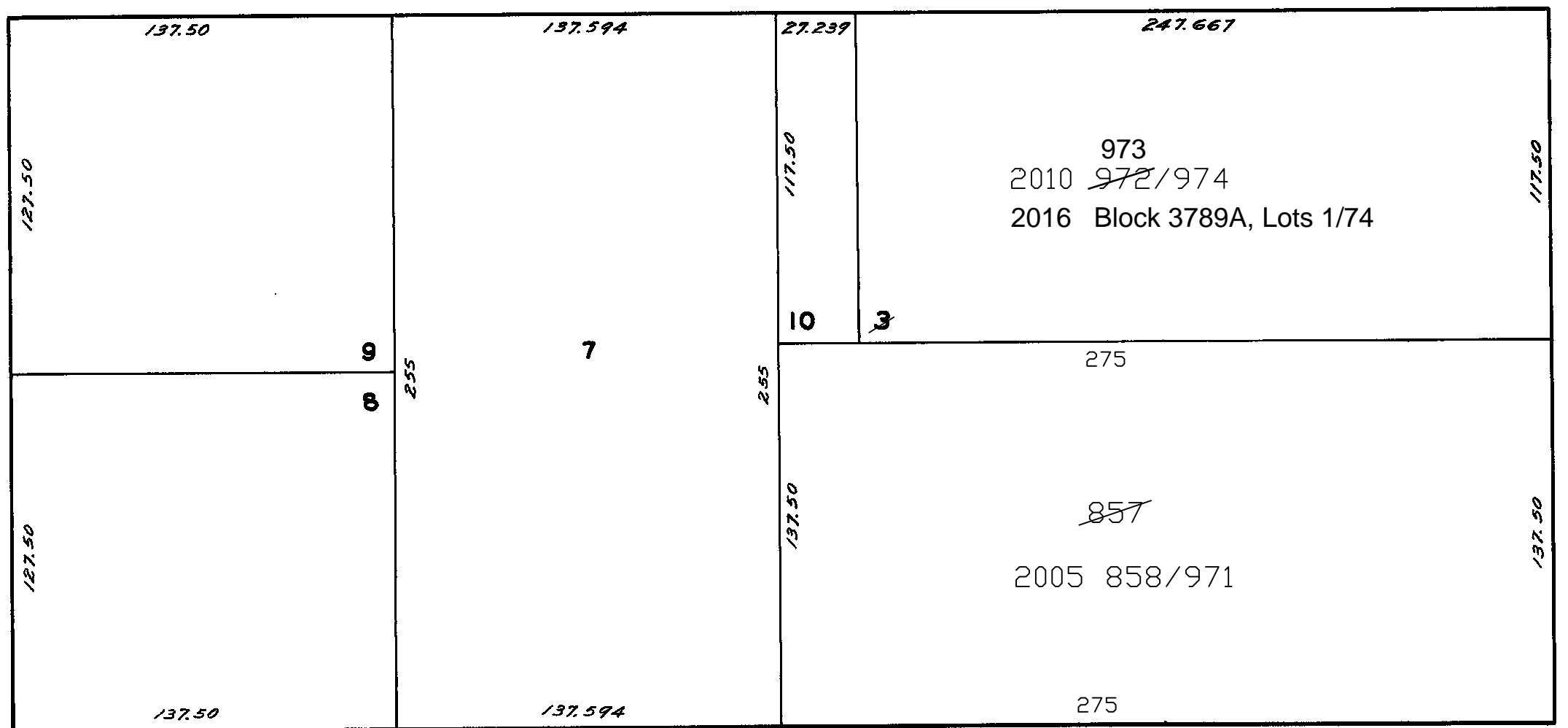
100 VARA BLK. 352



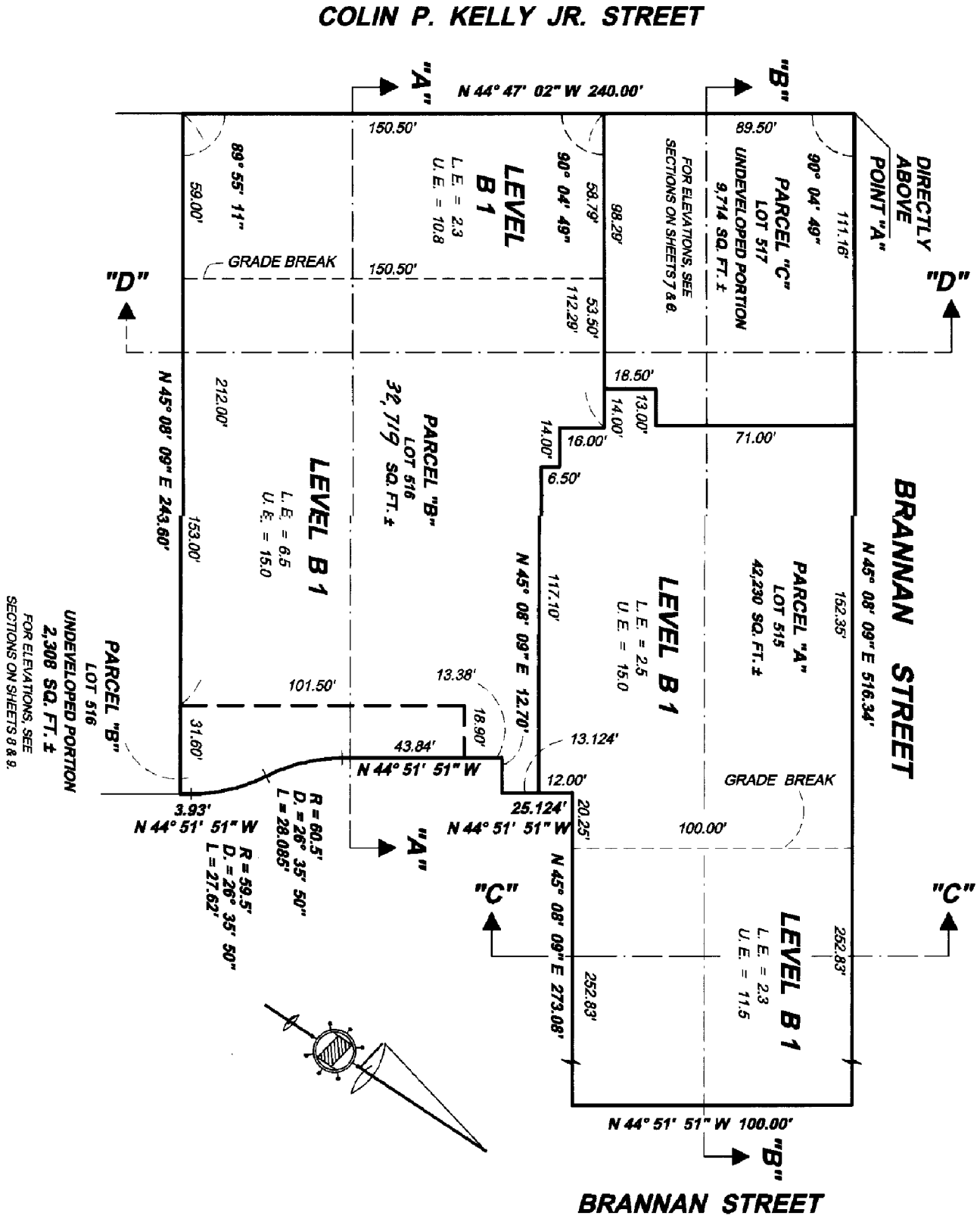
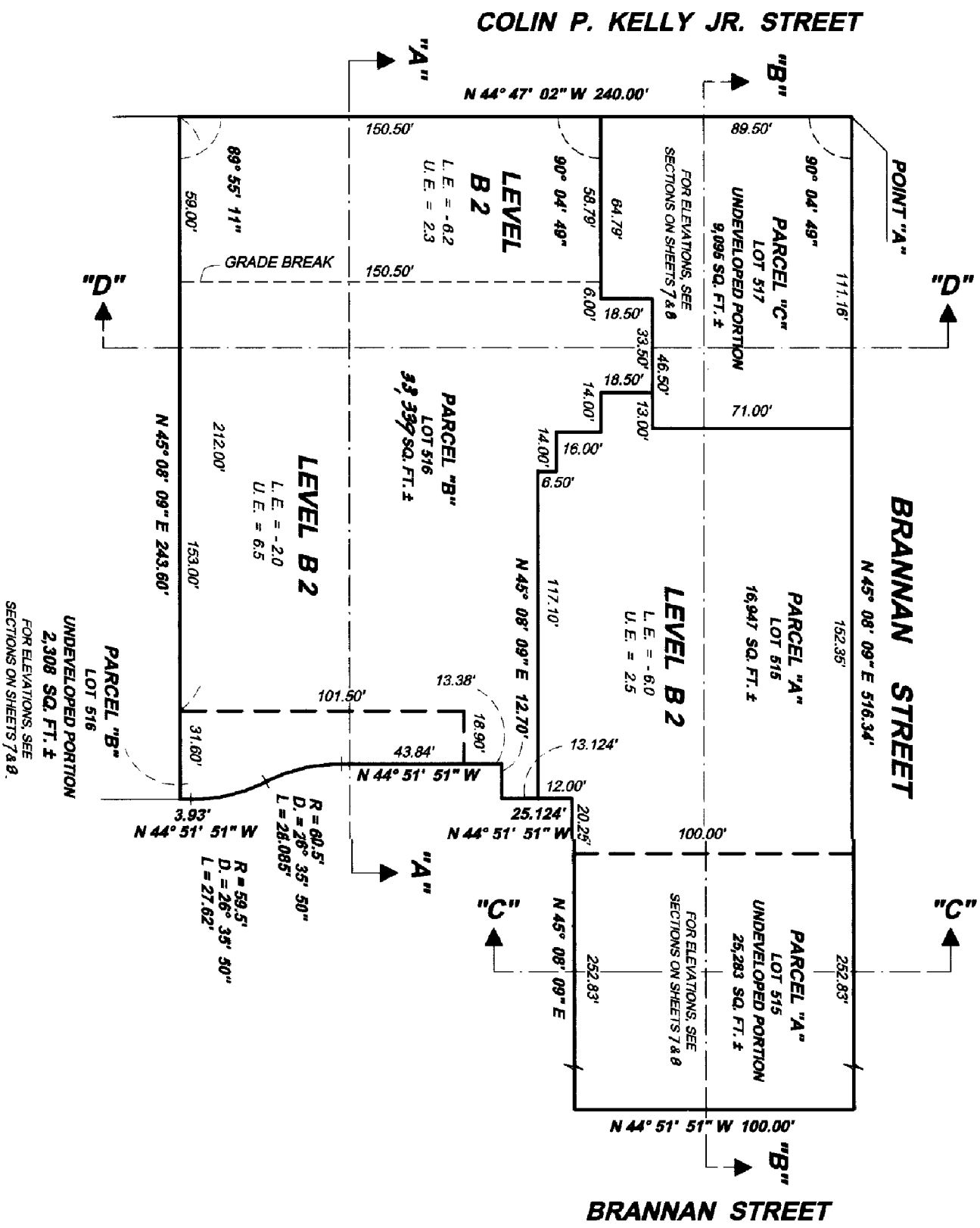
BRANNAN

TOWNSEND

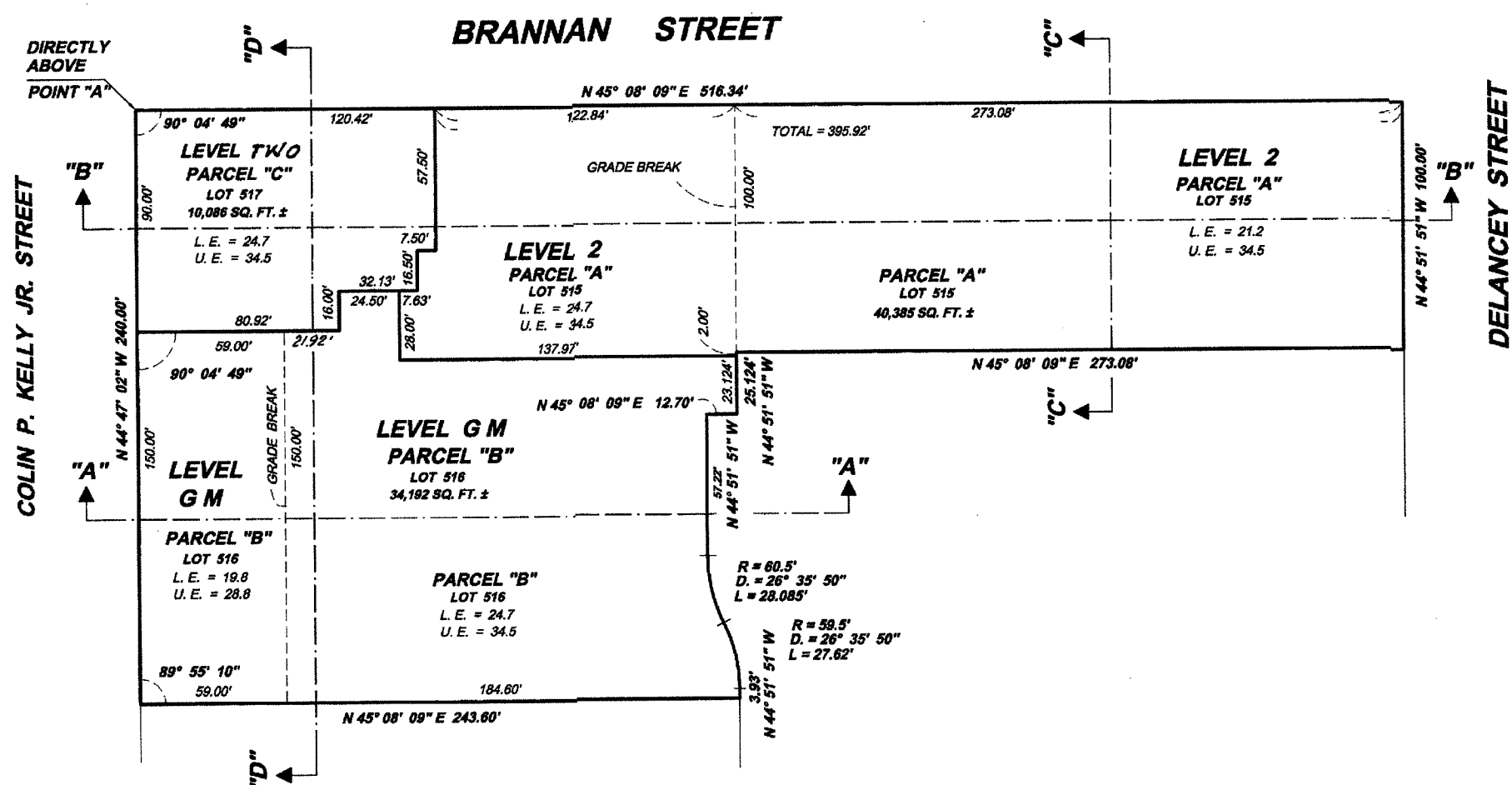
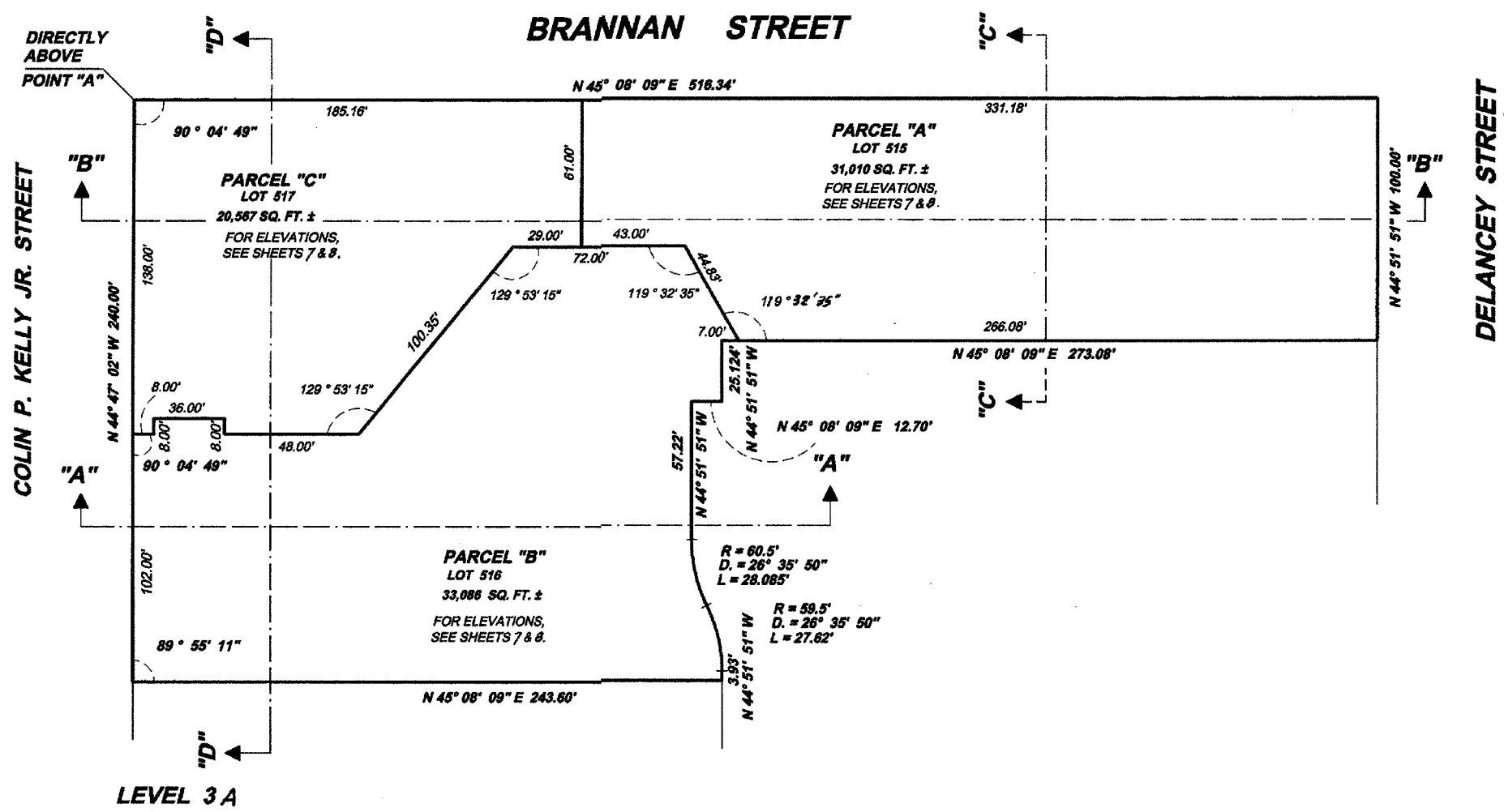
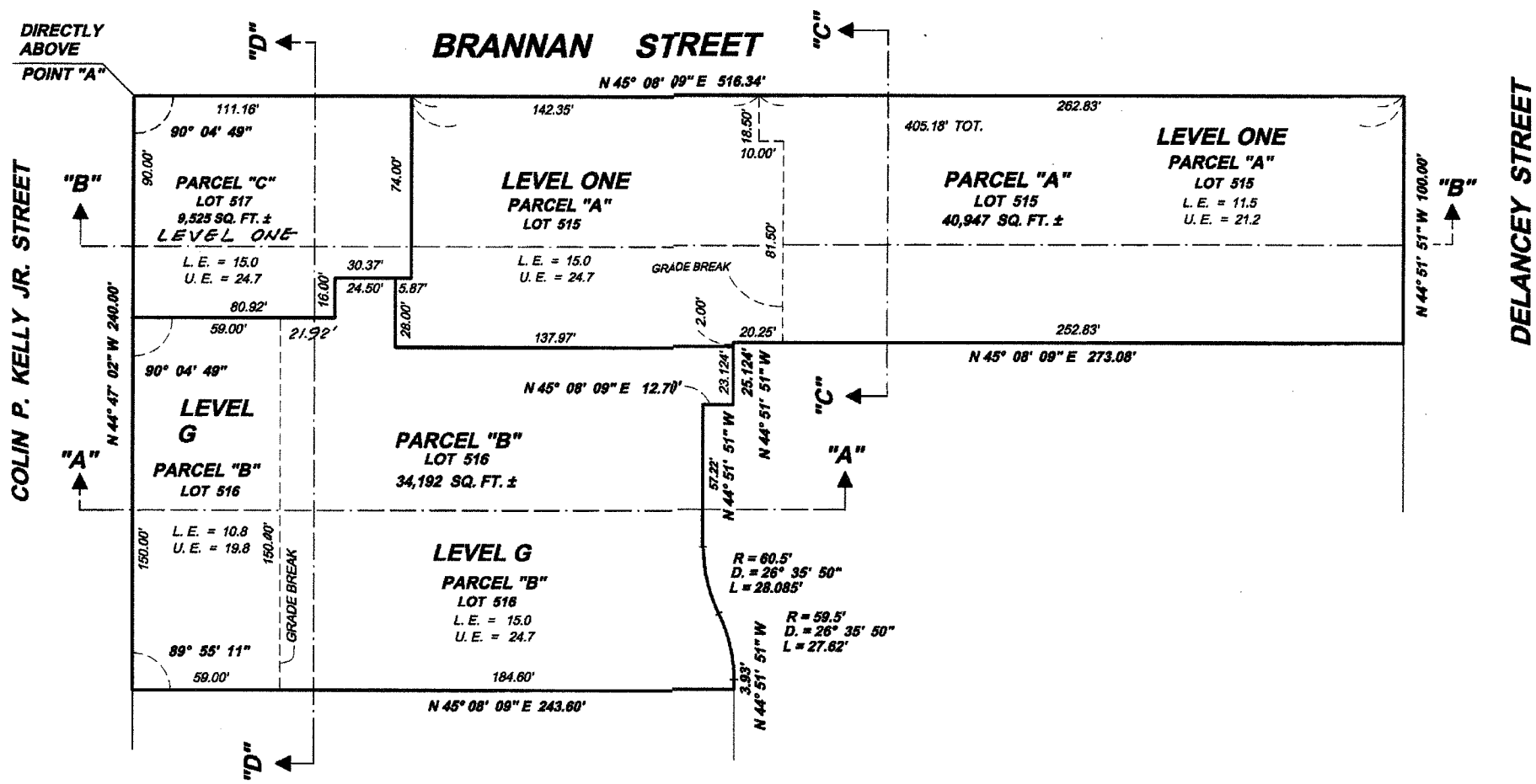
COLIN P. KELLY JR.



2ND ST.



NO.	LOT NO.	PARCEL NO.
1	515	A
2	516	B
3	517	C



2001 Roll

219 BRANNAN STREET

LOT	UNIT	%COMM AREA
518	A	2.66
519	1B	0.60
520	1C	0.60
521	1D	0.58
522	1E	0.35
523	1F	0.86
524	1G	0.71
525	1H	0.61
526	1J	0.56
527	1K	0.70
528	2B	0.72
529	2C	0.64
530	2D	0.82
531	2E	0.32
532	2F	0.90
533	2G	1.15
534	2H	0.82
535	2J	1.05
536	3A	0.83
537	3B	0.49
538	3C	0.61
539	3D	0.80
540	3E	0.32
541	3F	0.90
542	3G	1.15
543	3H	0.82
544	3J	1.05
545	3K	1.10
546	4A	0.83
547	4B	0.49
548	4C	0.61
549	4D	0.80
550	4E	0.32
551	4F	0.90
552	4G	1.15
553	4H	0.82
554	4J	0.78
555	4K	0.87
556	5A	0.83
557	5B	0.49
558	5C	0.61
559	5D	0.80
560	5E	0.76
561	5G	0.89
562	5H	0.56
563	5J	0.78
564	5K	0.87
565	6A	0.83
566	6B	0.49
567	6C	0.61
568	6D	0.80
569	6E	0.76
570	6G	0.89
571	6H	0.56
572	6J	0.78
573	6K	0.87
574	7A	0.83
575	7B	0.49
576	7C	0.61
577	7D	0.80
578	7E	0.76
579	7G	0.89
580	7H	0.56
581	7J	0.78
582	7K	0.82
583	8A	0.83

LOT	UNIT	%COMM AREA
584	8B	0.49
585	8C	0.61
586	8D	0.92
587	8H	0.75
588	8J	0.78
589	8K	0.87
590	9A	0.55
591	9B	0.49
592	9C	0.61
593	9D	0.92
594	9H	0.75
595	9J	0.78
596	9K	0.83
597	10A	0.55
598	10B	0.49
599	10C	0.61
600	10D	0.92
601	10H	0.75
602	10J	0.78
603	10K	0.88
604	11A	0.55
605	11B	0.49
606	11C	0.61
607	11D	0.92
608	11H	0.75
609	11J	0.78
610	11K	0.83
611	12A	0.55
612	12B	0.49
613	12C	0.61
614	12D	0.92
615	12H	0.75
616	12J	0.78
617	12K	0.88
618	14A	0.55
619	14B	0.49
620	14C	0.61
621	14D	0.92
622	14H	0.75
623	14J	0.78
624	14K	0.83
625	15A	0.55
626	15B	0.49
627	15C	0.61
628	15D	0.92
629	15H	0.75
630	15J	0.78
631	15K	0.88
632	16A	0.55
633	16B	0.49
634	16C	0.61
635	16D	0.92
636	16H	0.75
637	16J	0.78
638	16K	0.83
639	17A	1.10
640	17D	1.36
641	17H	0.95
642	17J	0.78
643	17K	0.78
644	18A	1.10
645	18D	1.36
646	18H	0.95
647	18J	0.78
648	18K	0.87

# Block 3789

## Sheet 5

Revised 2002

229 BRANNAN ST.  
A CONDOMINIUM

<u>LOT</u>	<u>UNIT</u>	<u>%COMM AREA</u>
649	2A	1.01
650	2B	0.63
651	2C	0.79
652	2D	0.89
653	2E	0.79
654	2G	0.67
655	2H	0.73
656	2J	0.65
657	3A	1.12
658	3C	1.04
659	3D	0.89
660	3E	0.78
661	3G	0.66
662	3H	0.74
663	3J	1.19
664	4A	1.12
665	4C	1.04
666	4D	0.89
667	4E	0.80
668	4G	0.66
669	4H	0.73
670	4J	1.19
671	5A	1.12
672	5C	1.04
673	5D	0.89
674	5E	0.80
675	5G	0.66
676	5H	0.73
677	5J	1.19
678	6A	1.12
679	6C	1.04
680	6D	0.89
681	6E	0.80
682	6G	0.66
683	6H	0.73
684	6J	1.19
685	7A	1.12
686	7C	1.04
687	7D	0.89
688	7E	0.80
689	7G	0.66
690	7H	0.73
691	7J	1.19
692	8A	1.24
693	8C	1.04
694	8D	0.89
695	8E	0.80
696	8G	1.14
697	8J	1.06
698	9A	1.24
699	9C	1.04

<u>LOT</u>	<u>UNIT</u>	<u>%COMM AREA</u>
700	9D	0.89
701	9E	0.80
702	9G	1.14
703	9J	1.06
704	10A	1.24
705	10C	1.04
706	10D	0.89
707	10E	0.80
708	10G	1.14
709	10J	1.06
710	11A	1.24
711	11C	1.04
712	11D	0.89
713	11E	0.80
714	11G	1.14
715	11J	1.06
716	12A	1.24
717	12C	1.04
718	12D	0.89
719	12E	0.80
720	12G	1.14
721	12J	1.06
722	14A	1.24
723	14C	1.04
724	14D	0.89
725	14E	0.80
726	14G	1.14
727	14J	1.06
728	15A	1.24
729	15C	1.04
730	15D	0.89
731	15E	0.80
732	15G	1.14
733	15J	1.06
734	16A	1.24
735	16C	1.04
736	16D	0.89
737	16E	0.80
738	16G	1.14
739	16J	1.06
740	17A	1.24
741	17C	1.04
742	17D	0.89
743	17E	0.80
744	17G	1.14
745	17J	1.06
746	18A	1.24
747	18C	1.04
748	18D	0.89
749	18E	0.80
750	18G	1.14
751	18J	1.06

Block 3789

516-2-609/7x1

# Block 3789

## Sheet 6

**THE BRANNAN  
TOWER "C"  
239 BRANNAN STREET  
A CONDOMINIUM**

Block3789 Lot517 into lots752to856 for 2003 roll

LOT	UNIT	% COMM. AREA
752	1	1.22
753	2	1.66
754	2A	0.87
755	2B	0.58
756	2C	0.75
757	2D	0.88
758	2E	0.85
759	2G	0.66
760	2H	0.66
761	2J	0.63
762	3A	0.96
763	3C	0.99
764	3D	0.88
765	3E	0.85
766	3G	0.68
767	3H	0.73
768	3J	1.14
769	4A	0.96
770	4C	0.99
771	4D	0.88
772	4E	0.85
773	4G	0.68
774	4H	0.73
775	4J	1.14
776	5A	0.96
777	5C	0.99
778	5D	0.88
779	5E	0.85
780	5G	0.68
781	5H	0.73
782	5J	1.14
783	6A	0.96
784	6C	0.99
785	6D	0.88
786	6E	0.85
787	6G	0.68
788	6H	0.73
789	6J	1.14
790	7A	0.96
791	7C	0.99
792	7D	0.88
793	7E	0.85
794	7G	0.68
795	7H	0.73
796	7J	1.14
797	8A	1.12
798	8C	0.99
799	8D	0.88
800	8E	0.85
801	8G	1.13
802	8J	1.04
803	9A	1.12
804	9C	0.99
805	9D	0.88
806	9E	0.85

LOT	UNIT	% COMM. AREA
807	9G	1.13
808	9J	1.04
809	10A	1.12
810	10C	0.99
811	10D	0.88
812	10E	0.85
813	10G	1.13
814	10J	1.04
815	11A	1.12
816	11C	0.99
817	11D	0.88
818	11E	0.85
819	11G	1.13
820	11J	1.04
821	12A	1.12
822	12C	0.99
823	12D	0.88
824	12E	0.85
825	12G	1.13
826	12J	1.04
827	14A	1.12
828	14C	0.99
829	14D	0.88
830	14E	0.85
831	14G	1.13
832	14J	1.04
833	15A	1.12
834	15C	0.99
835	15D	0.88
836	15E	0.85
837	15G	1.13
838	15J	1.04
839	16A	1.12
840	16C	0.99
841	16D	0.88
842	16E	0.85
843	16G	1.13
844	16J	1.04
845	17A	1.12
846	17C	0.99
847	17D	0.88
848	17E	0.85
849	17G	1.13
850	17J	1.04
851	18A	1.11
852	18C	0.99
853	18D	0.88
854	18E	0.85
855	18G	1.13
856	18J	1.04

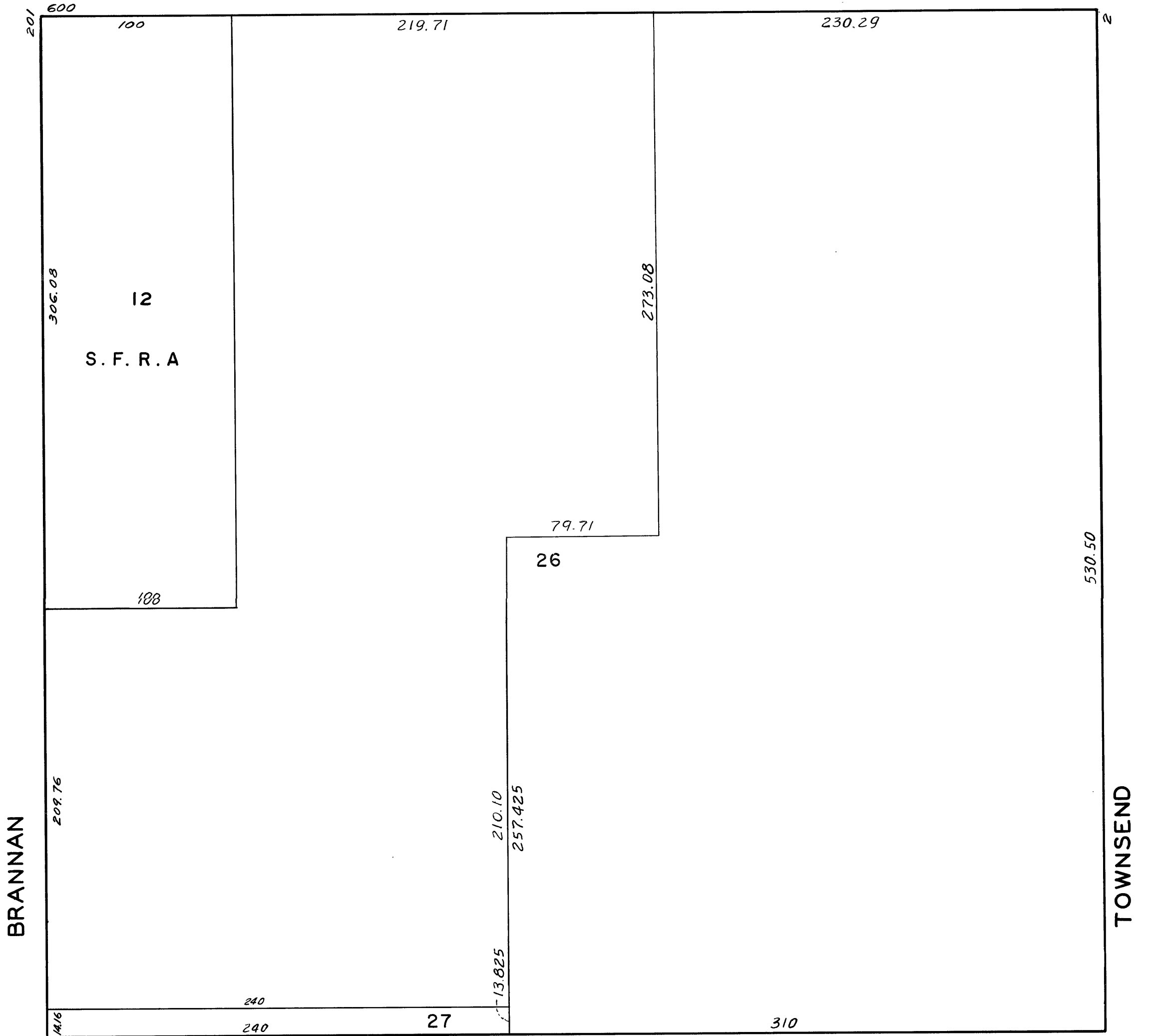
**LOTS MERGED**  
 LOTS 2E, 2D INTO LOT 1B -1943  
 " 6 " " 5 - "  
 " 2 & 2A " " 1 - "  
 " 2B, 2C " " 1A - "  
 " 1D " " 1B - '56

REVISED	'61
"	'66
"	'67
"	'68
"	'71
"	'75
"	'86

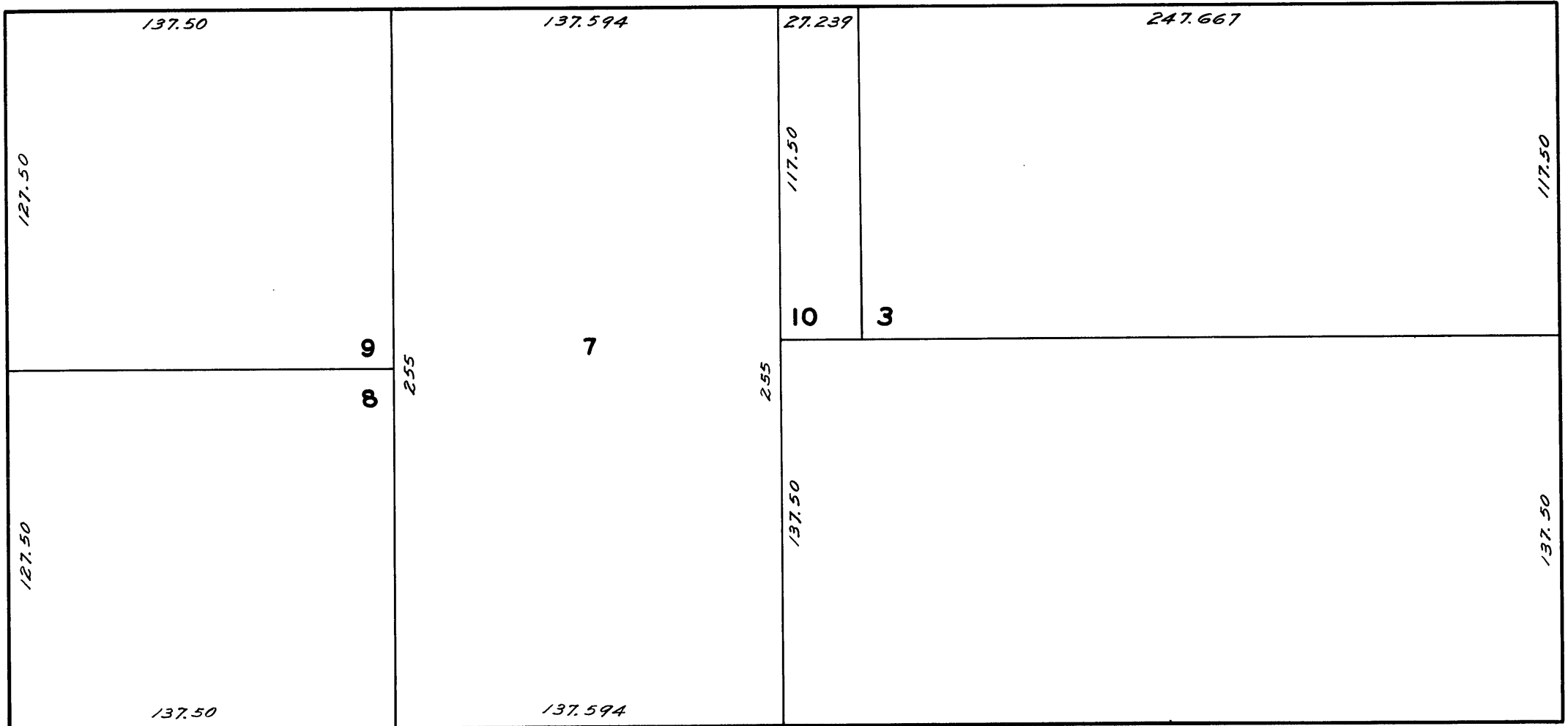
**3789**

100 VARA BLK. 352

1ST. ST.



COLIN P. KELLY JR.



2ND ST.



LOTS		MERGED	
LOTS 2E, 2D	INTO LOT 1B	-1943	
" 6	" 5	"	
" 2 & 2A	" 1	"	
" 2B, 2C	" 1A	"	
" 1D	" 1B	"	

lot857 into lots858/971 for 2005 roll  
 lots20 & 25 into lots 510&511 for 1997 roll  
 lot511 into lots 444/509 for 1997 roll  
 lots12 & 510 into lot514 for 2000 roll  
 lot514 into lots515/517 for 2001 roll  
 lot515 into lots518to648 for 2001 roll  
 lot516 into lots649to751 for 2002 roll  
 lot517 into lots752to856 for 2003 roll  
 lots4&5 into lot857 for 2004 roll

REVISED	'61
"	'66
"	'67
"	'68
"	'71
"	'75
"	'86

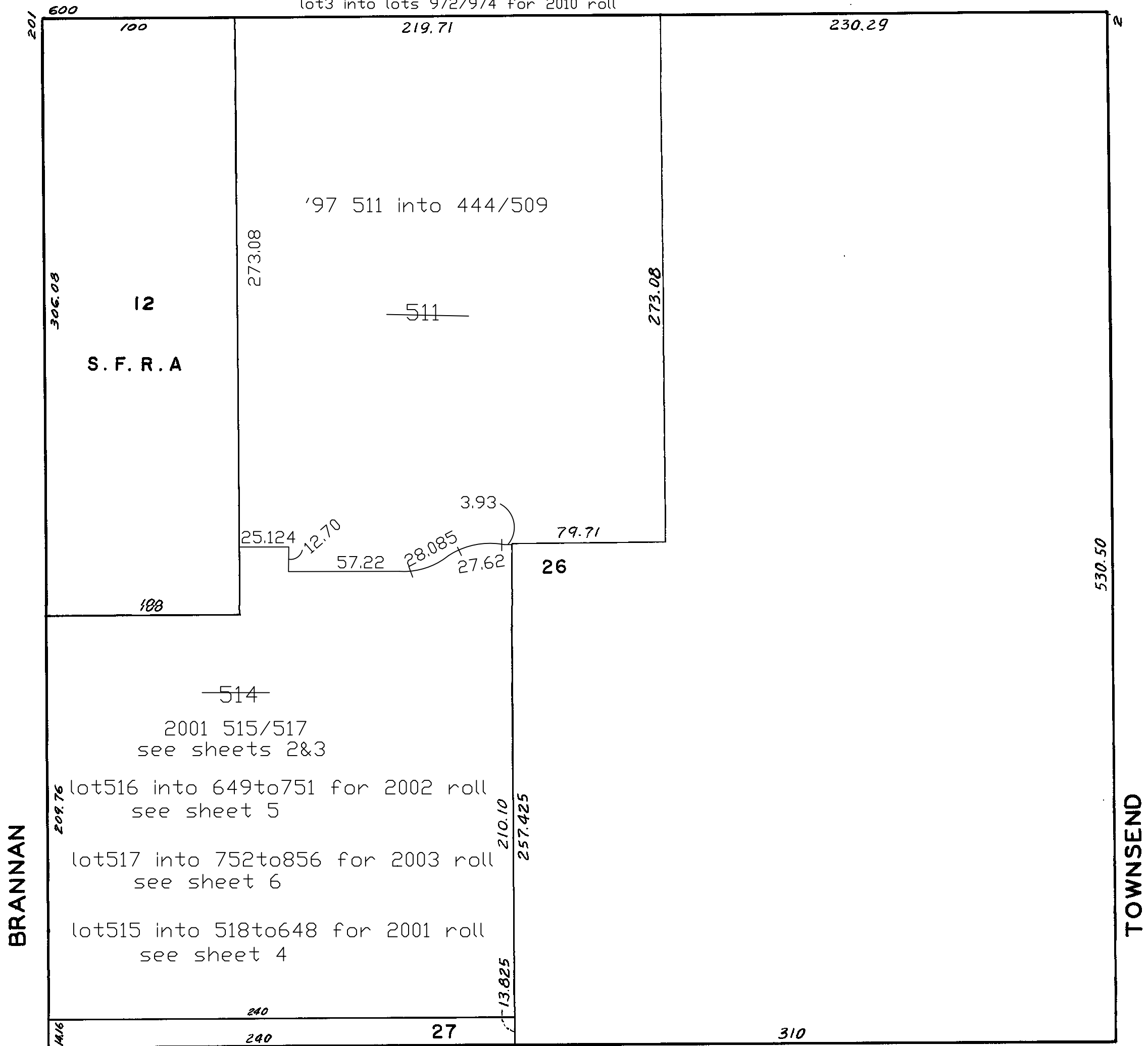
Revised 2002 Revised 2003  
 Revised 1997 Revised 2005  
 Revised 2000  
 Revised 2001

SHEET 1

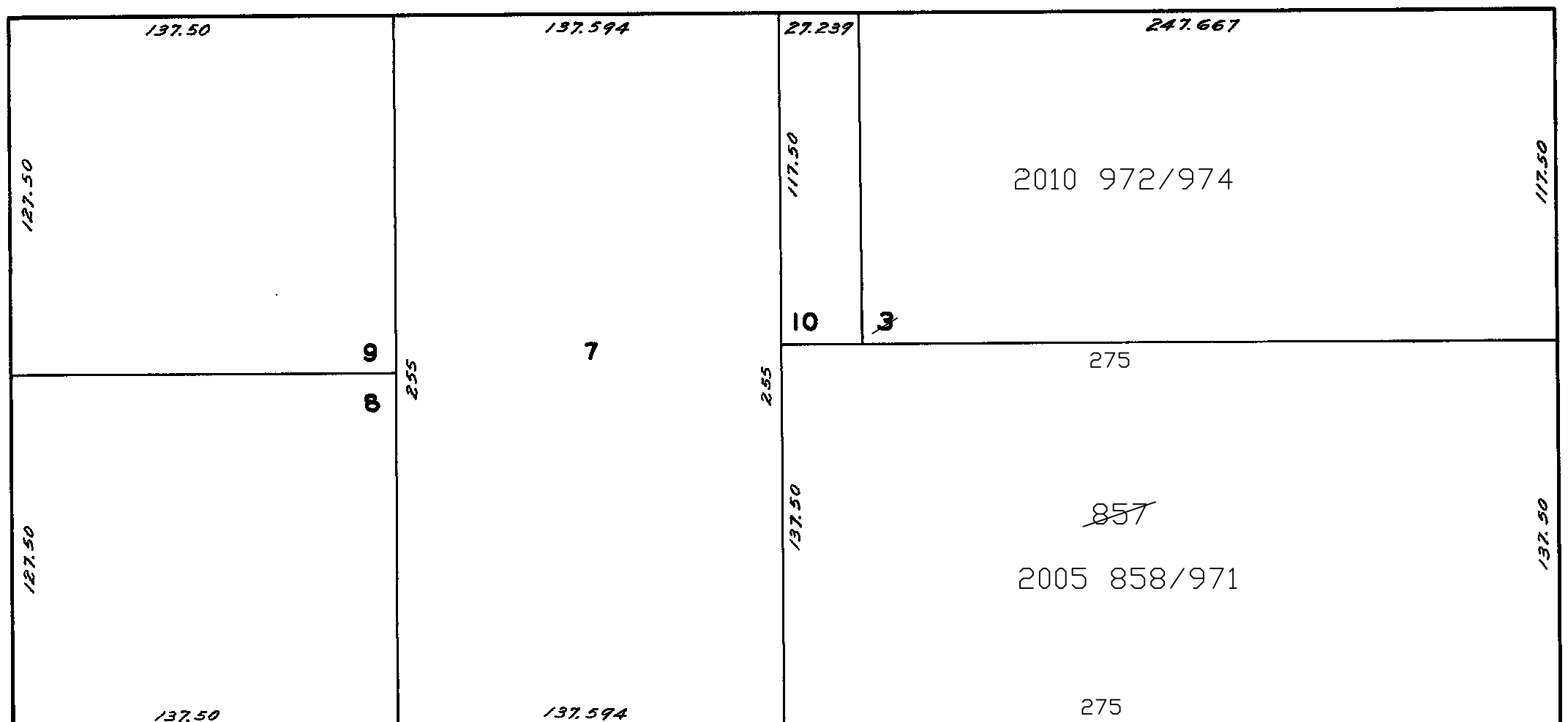
**3789** Revised 2010

1ST. ST. lot3 into lots 972/974 for 2010 roll

Revised 2004 **100 VARA BLK. 352**



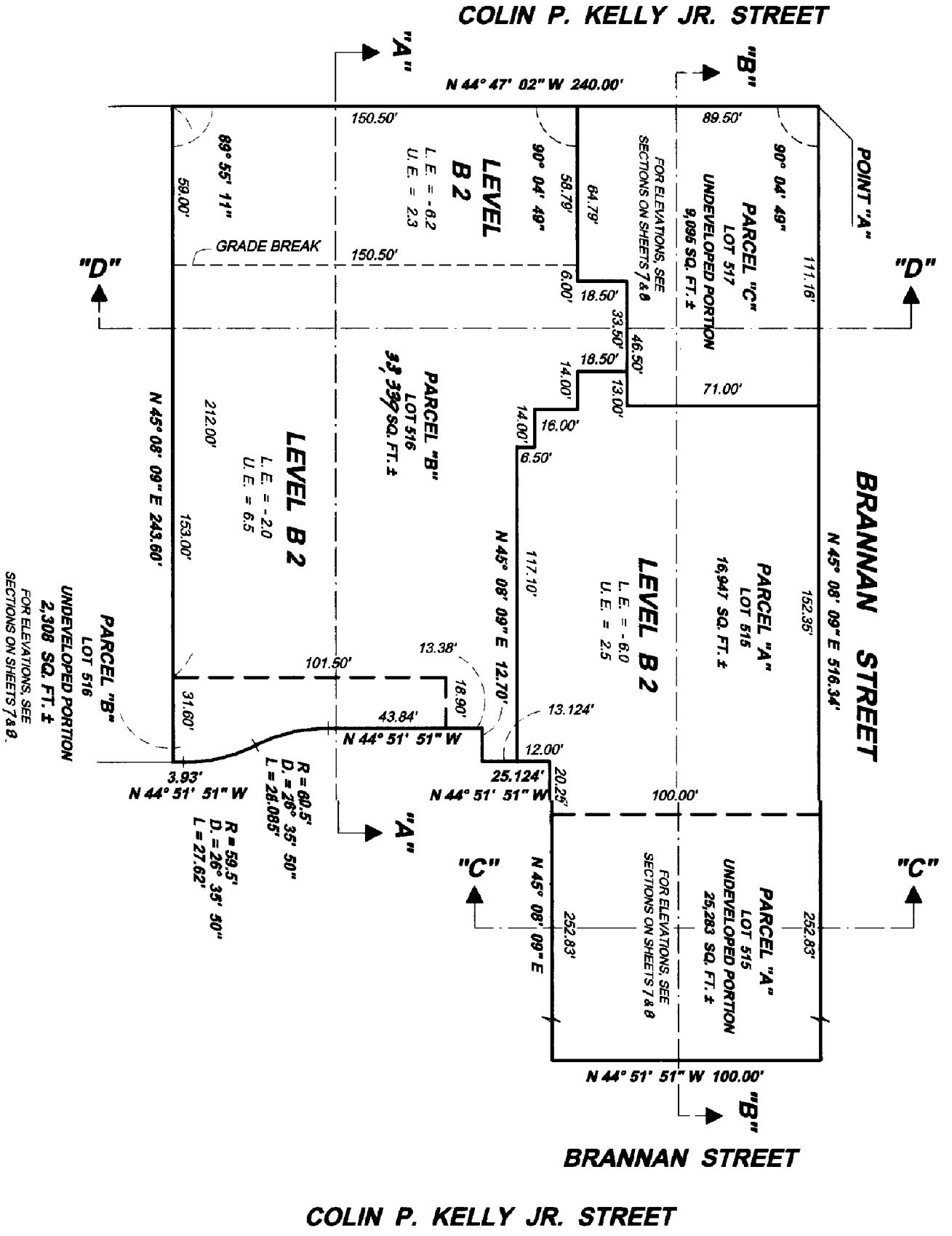
COLIN P. KELLY JR.



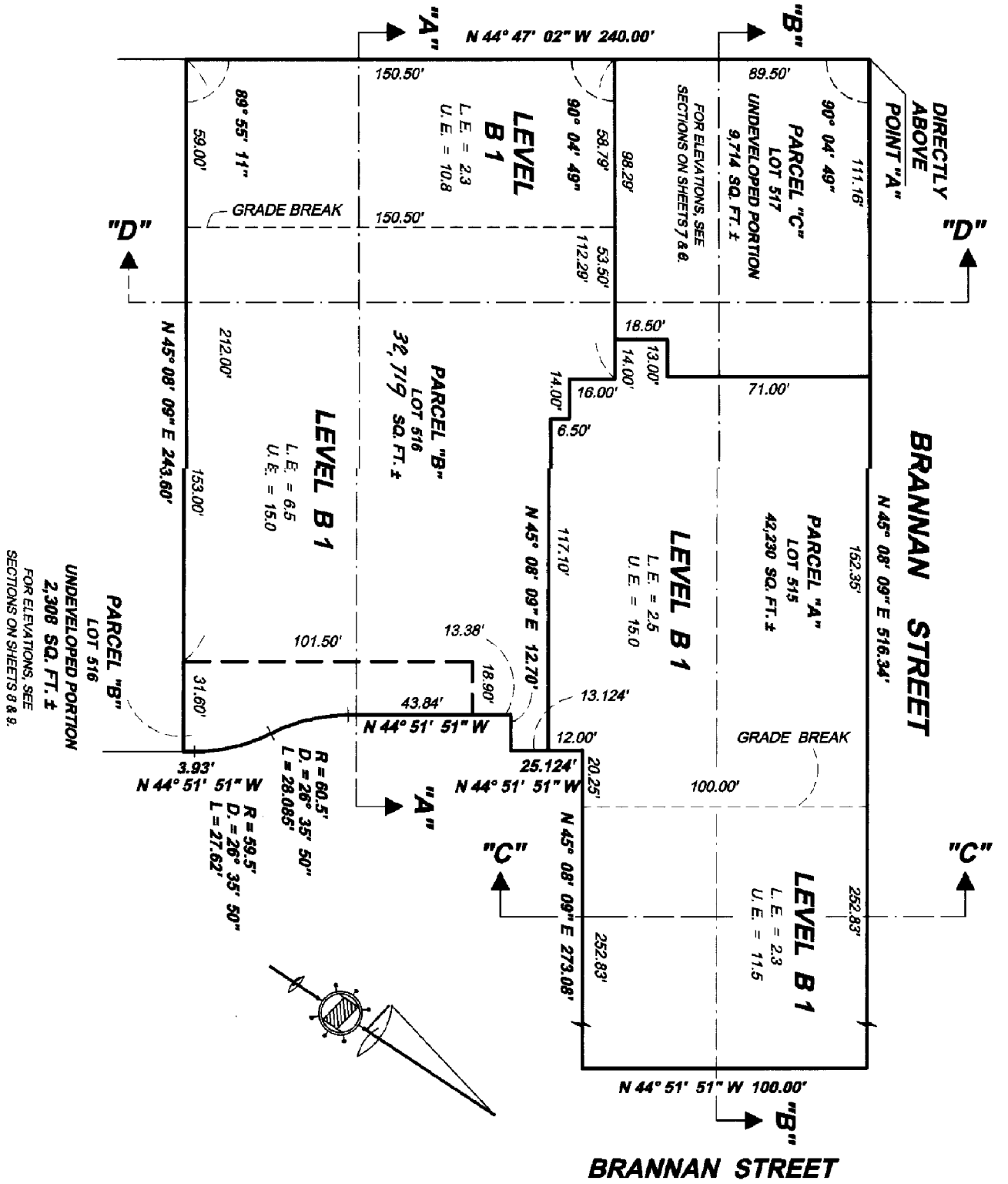
2ND ST.

BLOCK 3789

SHEET 2



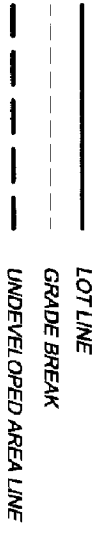
COLIN P. KELLY JR. STREET



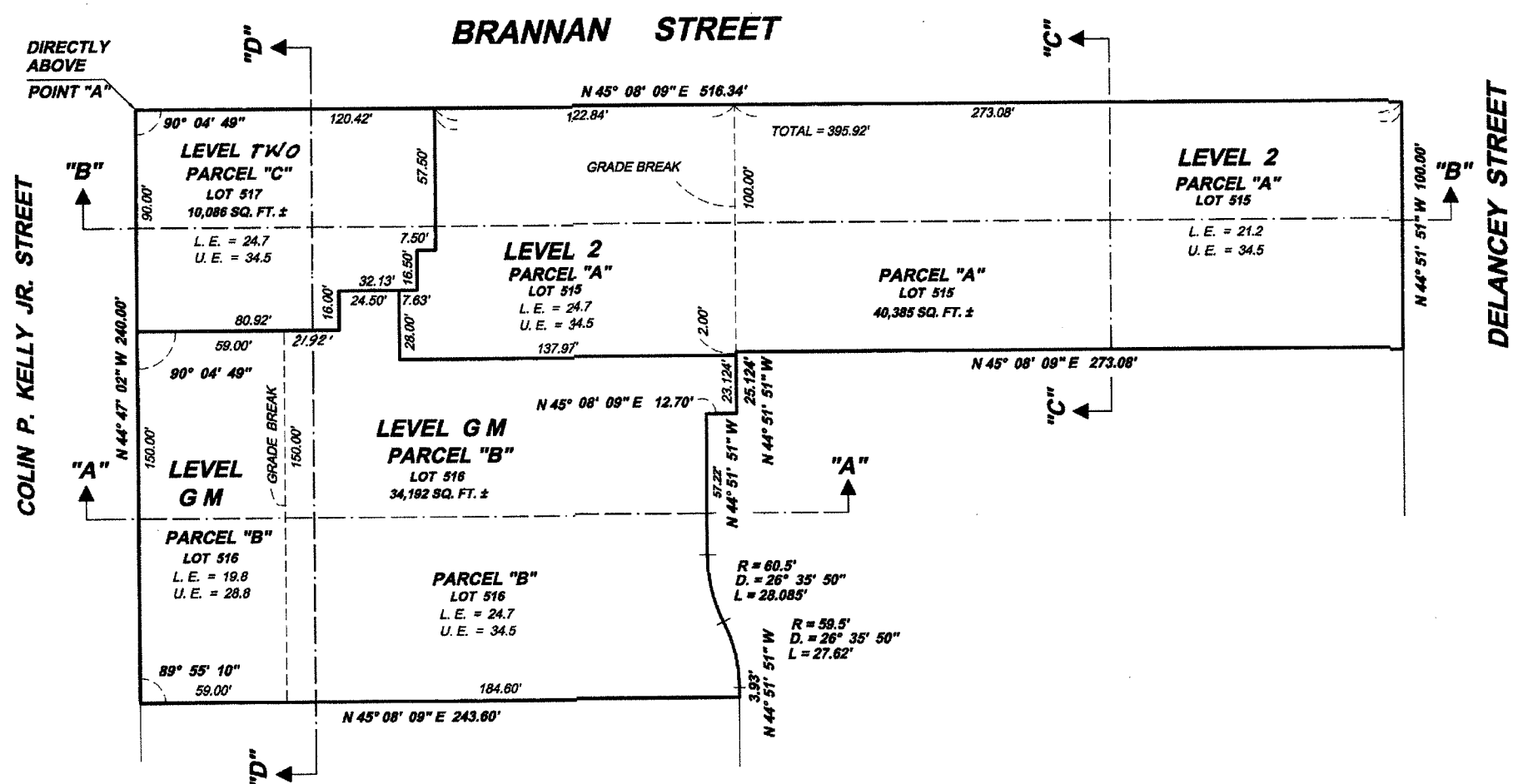
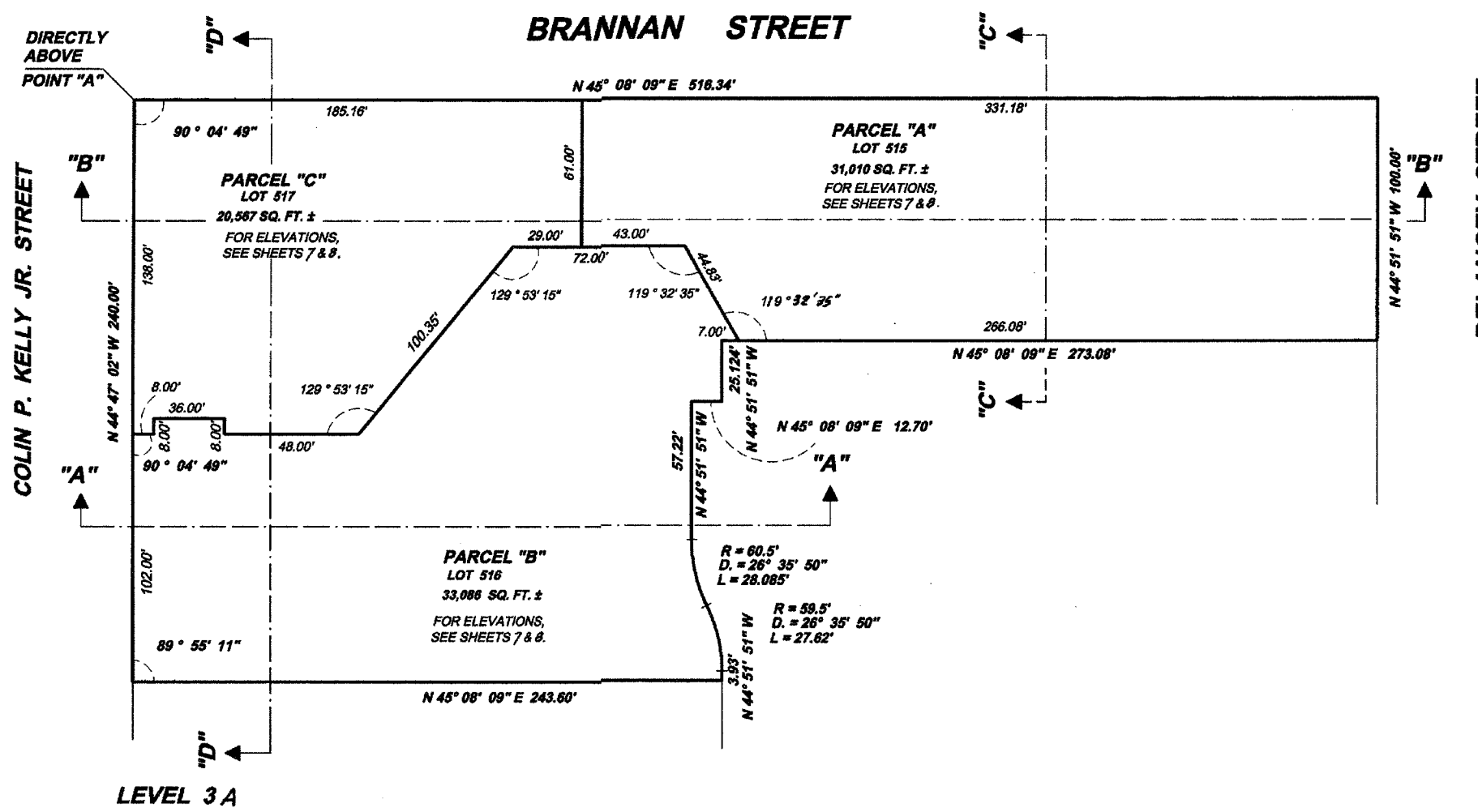
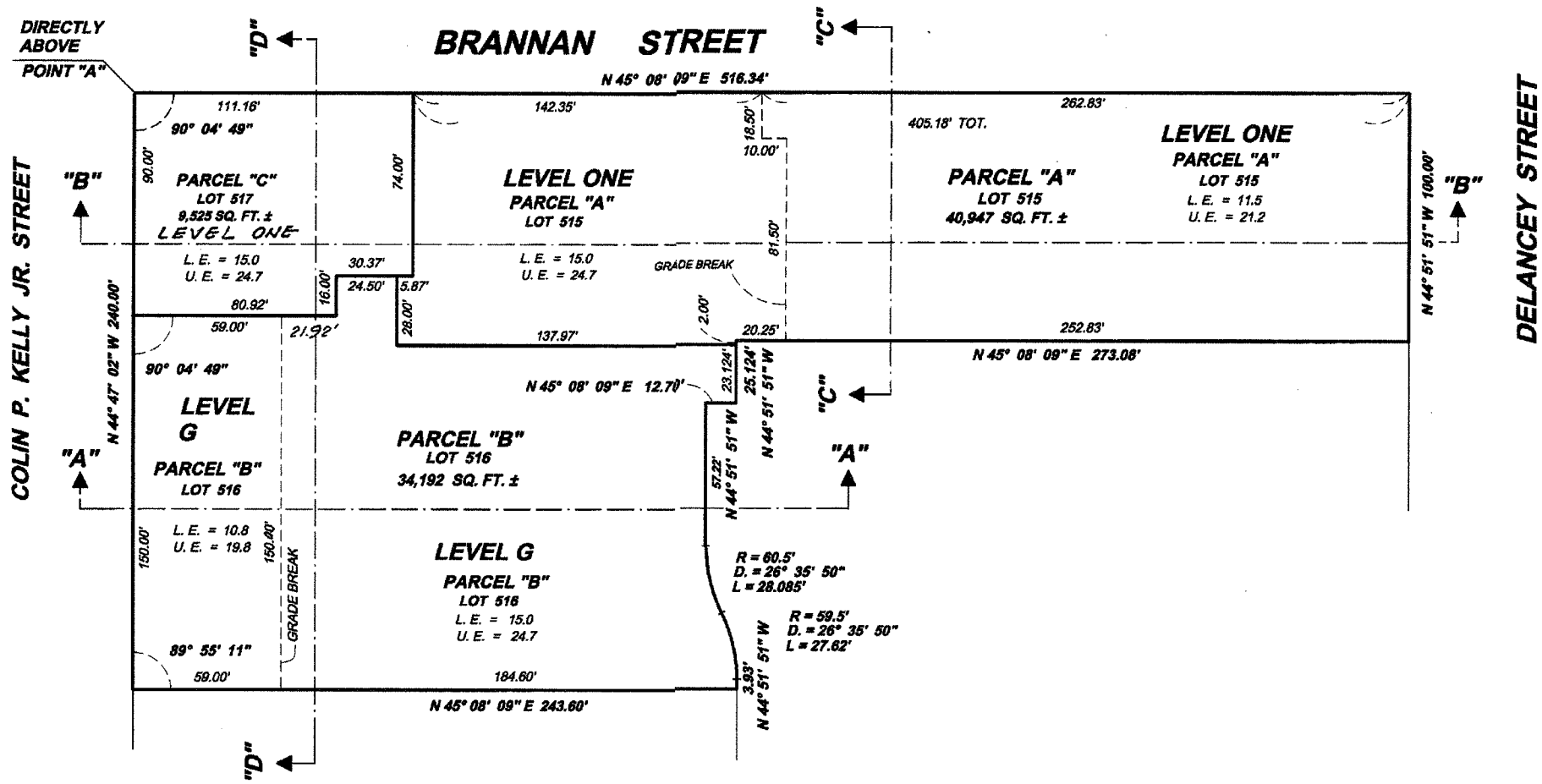
BRANNAN STREET

ALL ANGLES ARE 90° UNLESS OTHERWISE SHOWN.

LEGEND:



NO.	LOT NO.	PARCEL NO.
1	515	A
2	516	B
3	517	C



2001 Roll

219 BRANNAN STREET

LOT	UNIT	%COMM AREA
518	A	2.66
519	1B	0.60
520	1C	0.60
521	1D	0.58
522	1E	0.35
523	1F	0.86
524	1G	0.71
525	1H	0.61
526	1J	0.56
527	1K	0.70
528	2B	0.72
529	2C	0.64
530	2D	0.82
531	2E	0.32
532	2F	0.90
533	2G	1.15
534	2H	0.82
535	2J	1.05
536	3A	0.83
537	3B	0.49
538	3C	0.61
539	3D	0.80
540	3E	0.32
541	3F	0.90
542	3G	1.15
543	3H	0.82
544	3J	1.05
545	3K	1.10
546	4A	0.83
547	4B	0.49
548	4C	0.61
549	4D	0.80
550	4E	0.32
551	4F	0.90
552	4G	1.15
553	4H	0.82
554	4J	0.78
555	4K	0.87
556	5A	0.83
557	5B	0.49
558	5C	0.61
559	5D	0.80
560	5E	0.76
561	5G	0.89
562	5H	0.56
563	5J	0.78
564	5K	0.87
565	6A	0.83
566	6B	0.49
567	6C	0.61
568	6D	0.80
569	6E	0.76
570	6G	0.89
571	6H	0.56
572	6J	0.78
573	6K	0.87
574	7A	0.83
575	7B	0.49
576	7C	0.61
577	7D	0.80
578	7E	0.76
579	7G	0.89
580	7H	0.56
581	7J	0.78
582	7K	0.82
583	8A	0.83

LOT	UNIT	%COMM AREA
584	8B	0.49
585	8C	0.61
586	8D	0.92
587	8H	0.75
588	8J	0.78
589	8K	0.87
590	9A	0.55
591	9B	0.49
592	9C	0.61
593	9D	0.92
594	9H	0.75
595	9J	0.78
596	9K	0.83
597	10A	0.55
598	10B	0.49
599	10C	0.61
600	10D	0.92
601	10H	0.75
602	10J	0.78
603	10K	0.88
604	11A	0.55
605	11B	0.49
606	11C	0.61
607	11D	0.92
608	11H	0.75
609	11J	0.78
610	11K	0.83
611	12A	0.55
612	12B	0.49
613	12C	0.61
614	12D	0.92
615	12H	0.75
616	12J	0.78
617	12K	0.88
618	14A	0.55
619	14B	0.49
620	14C	0.61
621	14D	0.92
622	14H	0.75
623	14J	0.78
624	14K	0.83
625	15A	0.55
626	15B	0.49
627	15C	0.61
628	15D	0.92
629	15H	0.75
630	15J	0.78
631	15K	0.88
632	16A	0.55
633	16B	0.49
634	16C	0.61
635	16D	0.92
636	16H	0.75
637	16J	0.78
638	16K	0.83
639	17A	1.10
640	17D	1.36
641	17H	0.95
642	17J	0.78
643	17K	0.78
644	18A	1.10
645	18D	1.36
646	18H	0.95
647	18J	0.78
648	18K	0.87

# Block 3789

## Sheet 5

Revised 2002

229 BRANNAN ST.  
A CONDOMINIUM

<u>LOT</u>	<u>UNIT</u>	<u>%COMM AREA</u>
649	2A	1.01
650	2B	0.63
651	2C	0.79
652	2D	0.89
653	2E	0.79
654	2G	0.67
655	2H	0.73
656	2J	0.65
657	3A	1.12
658	3C	1.04
659	3D	0.89
660	3E	0.78
661	3G	0.66
662	3H	0.74
663	3J	1.19
664	4A	1.12
665	4C	1.04
666	4D	0.89
667	4E	0.80
668	4G	0.66
669	4H	0.73
670	4J	1.19
671	5A	1.12
672	5C	1.04
673	5D	0.89
674	5E	0.80
675	5G	0.66
676	5H	0.73
677	5J	1.19
678	6A	1.12
679	6C	1.04
680	6D	0.89
681	6E	0.80
682	6G	0.66
683	6H	0.73
684	6J	1.19
685	7A	1.12
686	7C	1.04
687	7D	0.89
688	7E	0.80
689	7G	0.66
690	7H	0.73
691	7J	1.19
692	8A	1.24
693	8C	1.04
694	8D	0.89
695	8E	0.80
696	8G	1.14
697	8J	1.06
698	9A	1.24
699	9C	1.04

<u>LOT</u>	<u>UNIT</u>	<u>%COMM AREA</u>
700	9D	0.89
701	9E	0.80
702	9G	1.14
703	9J	1.06
704	10A	1.24
705	10C	1.04
706	10D	0.89
707	10E	0.80
708	10G	1.14
709	10J	1.06
710	11A	1.24
711	11C	1.04
712	11D	0.89
713	11E	0.80
714	11G	1.14
715	11J	1.06
716	12A	1.24
717	12C	1.04
718	12D	0.89
719	12E	0.80
720	12G	1.14
721	12J	1.06
722	14A	1.24
723	14C	1.04
724	14D	0.89
725	14E	0.80
726	14G	1.14
727	14J	1.06
728	15A	1.24
729	15C	1.04
730	15D	0.89
731	15E	0.80
732	15G	1.14
733	15J	1.06
734	16A	1.24
735	16C	1.04
736	16D	0.89
737	16E	0.80
738	16G	1.14
739	16J	1.06
740	17A	1.24
741	17C	1.04
742	17D	0.89
743	17E	0.80
744	17G	1.14
745	17J	1.06
746	18A	1.24
747	18C	1.04
748	18D	0.89
749	18E	0.80
750	18G	1.14
751	18J	1.06

Block 3789

516-2-609/7x1

# Block 3789

## Sheet 6

### THE BRANNAN TOWER "C" 239 BRANNAN STREET A CONDOMINIUM

Block3789 Lot517 into lots752to856 for 2003 roll

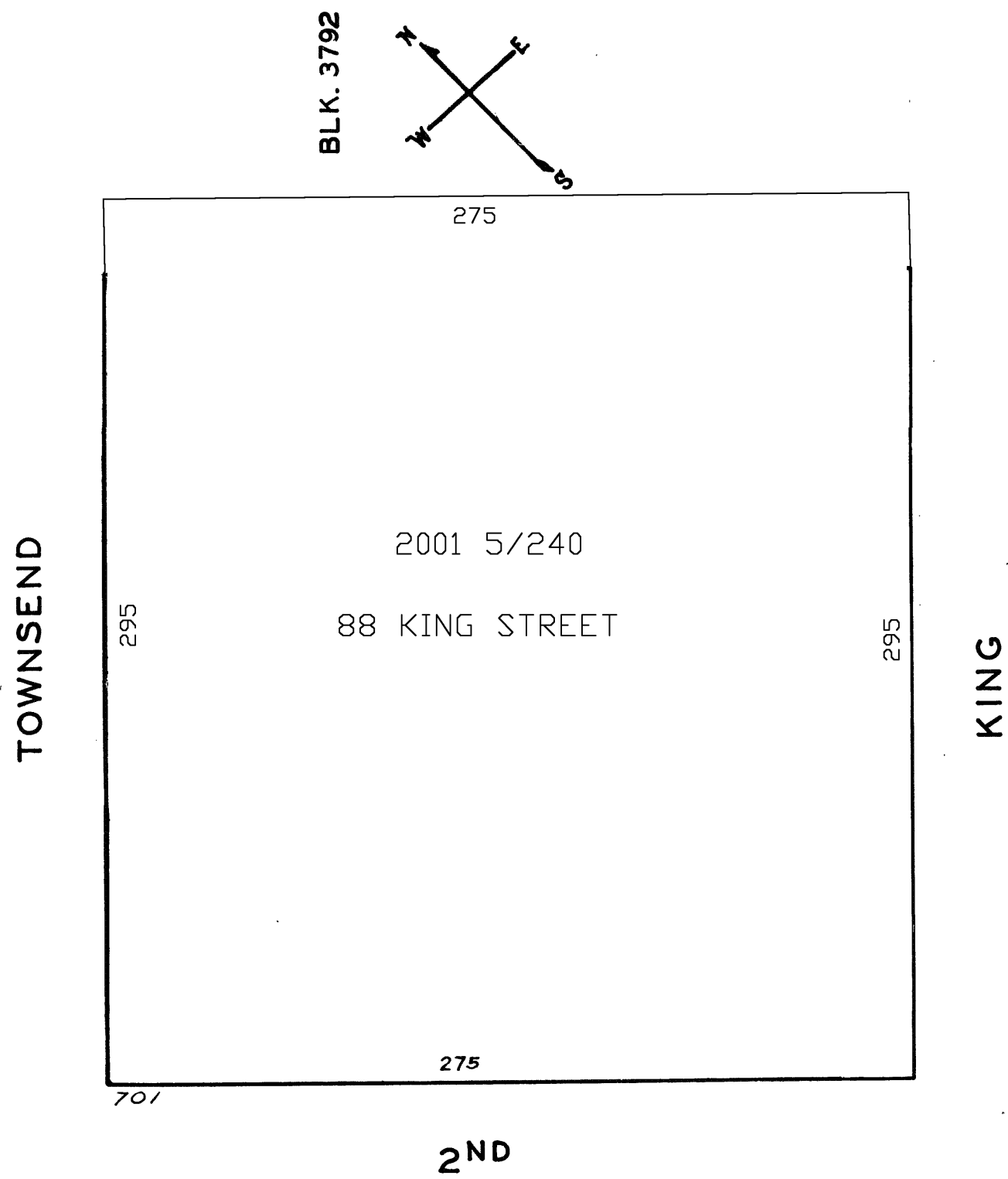
LOT	UNIT	% COMM. AREA
752	1	1.22
753	2	1.66
754	2A	0.87
755	2B	0.58
756	2C	0.75
757	2D	0.88
758	2E	0.85
759	2G	0.66
760	2H	0.66
761	2J	0.63
762	3A	0.96
763	3C	0.99
764	3D	0.88
765	3E	0.85
766	3G	0.68
767	3H	0.73
768	3J	1.14
769	4A	0.96
770	4C	0.99
771	4D	0.88
772	4E	0.85
773	4G	0.68
774	4H	0.73
775	4J	1.14
776	5A	0.96
777	5C	0.99
778	5D	0.88
779	5E	0.85
780	5G	0.68
781	5H	0.73
782	5J	1.14
783	6A	0.96
784	6C	0.99
785	6D	0.88
786	6E	0.85
787	6G	0.68
788	6H	0.73
789	6J	1.14
790	7A	0.96
791	7C	0.99
792	7D	0.88
793	7E	0.85
794	7G	0.68
795	7H	0.73
796	7J	1.14
797	8A	1.12
798	8C	0.99
799	8D	0.88
800	8E	0.85
801	8G	1.13
802	8J	1.04
803	9A	1.12
804	9C	0.99
805	9D	0.88
806	9E	0.85

LOT	UNIT	% COMM. AREA
807	9G	1.13
808	9J	1.04
809	10A	1.12
810	10C	0.99
811	10D	0.88
812	10E	0.85
813	10G	1.13
814	10J	1.04
815	11A	1.12
816	11C	0.99
817	11D	0.88
818	11E	0.85
819	11G	1.13
820	11J	1.04
821	12A	1.12
822	12C	0.99
823	12D	0.88
824	12E	0.85
825	12G	1.13
826	12J	1.04
827	14A	1.12
828	14C	0.99
829	14D	0.88
830	14E	0.85
831	14G	1.13
832	14J	1.04
833	15A	1.12
834	15C	0.99
835	15D	0.88
836	15E	0.85
837	15G	1.13
838	15J	1.04
839	16A	1.12
840	16C	0.99
841	16D	0.88
842	16E	0.85
843	16G	1.13
844	16J	1.04
845	17A	1.12
846	17C	0.99
847	17D	0.88
848	17E	0.85
849	17G	1.13
850	17J	1.04
851	18A	1.11
852	18C	0.99
853	18D	0.88
854	18E	0.85
855	18G	1.13
856	18J	1.04

*Lot 3 merged into Lot 1. "1943"*

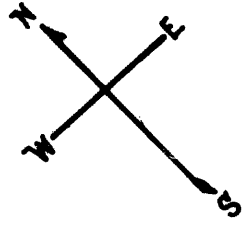
Block3792Lot3&Block3793Lots1&2 Into Block3793Lot4 for 2001 roll

Revised 2001



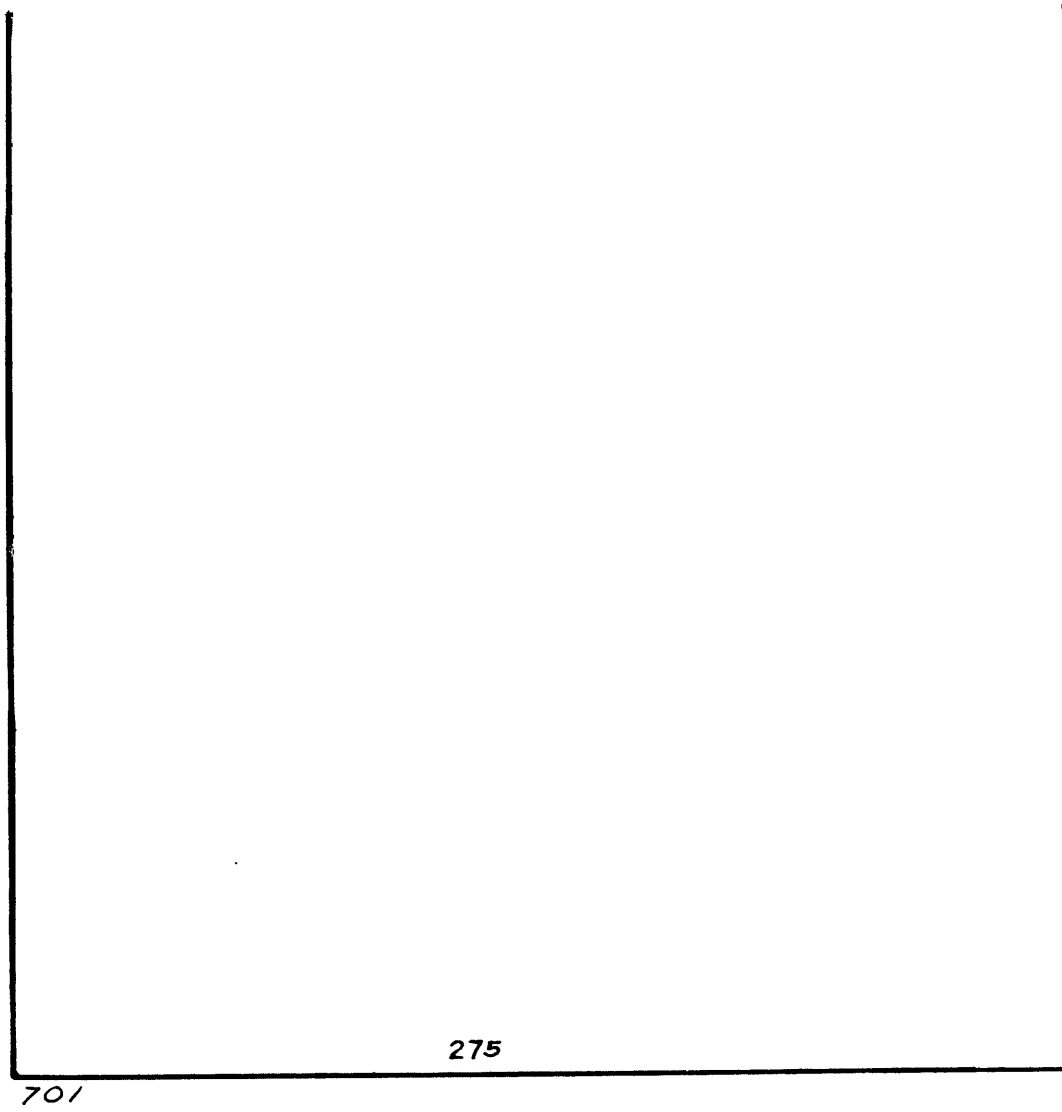
Lot 3 merged into Lot 1. "1943"

BLK. 3792



TOWNSEND

KING



2ND